



PRESBYTERIAN  
**SENIOR LIVING**  
Westminster Place

*Affordable Apartment Living  
for Those Age 62 and Older*



**HUNTINGDON, PA**

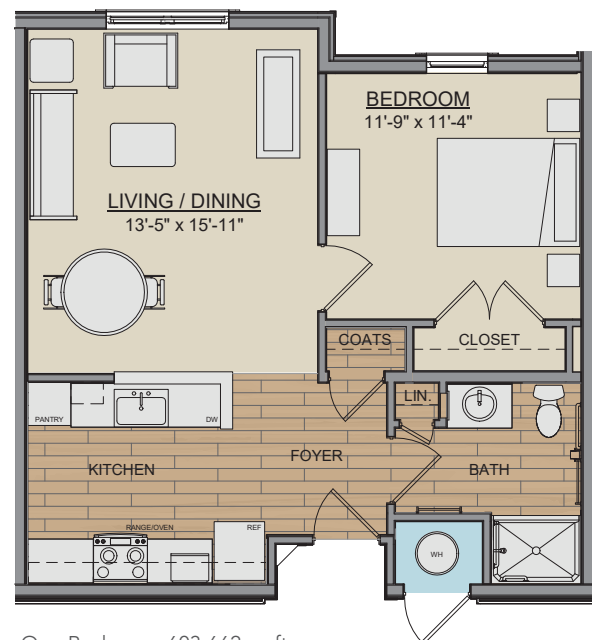
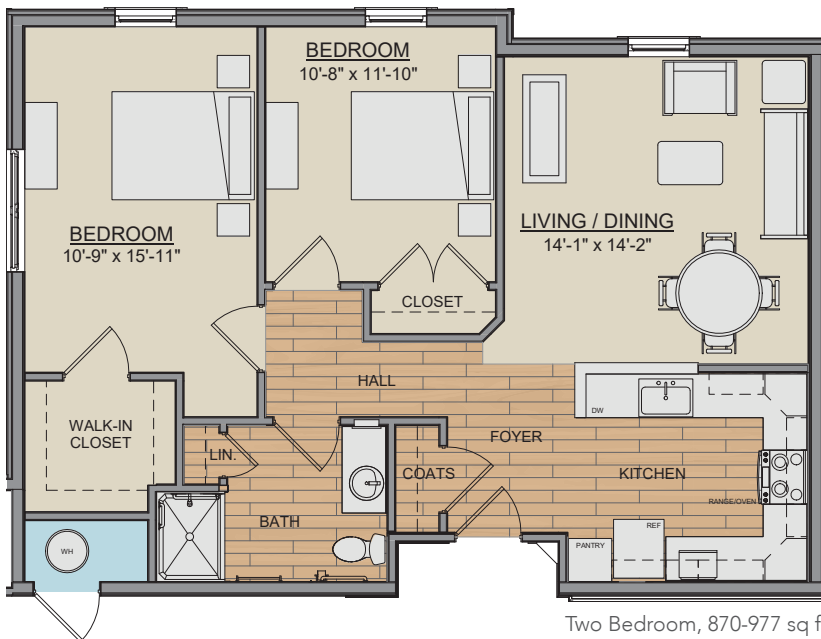
# Discover Westminster Place at Huntingdon

## Each energy-efficient apartment includes:

- Well-equipped kitchen
- Individually controlled heating and central air conditioning
- Smoke alarms
- Pre-wired for phone and cable TV

## Additional features include:

- Spacious closets
- Interior and exterior apartment maintenance
- Ample, free parking
- Large Community Room with kitchen
- Pet-friendly
- Six mobility accessible apartments
- On-site laundry facilities
- Additional storage
- Tobacco- and smoke-free community
- Resident services coordination
- Fitness Center, Lounge, Library
- On-site mail
- 24-hr emergency maintenance
- Controlled access building



We offer efficiencies, one-bedroom and two-bedroom floor plans. These are sample layouts for our apartments. We also have accessible apartments for those with mobility and/or hearing/vision impairments.

If you or a member of your household has a disability and requires a reasonable accommodation, you may request it at any time during the application process.

# Frequently Asked Questions

- ***Where is the community?***

Westminster Place is located in Huntingdon, PA, near State College, Altoona and Raystown Lake. Westminster Place opened its doors in 2022 and was built to deliver comfort, stability and opportunity.

- ***What are the rents?***

Rent and income limits have been established under federal program guidelines based on household size. Qualifying income limits and rents are adjusted annually. Housing Choice and VASH Vouchers are accepted.

Please Note: Apartments within the community have different income limits. An applicant's income eligibility must be determined as it relates to an available apartment. If an applicant does not meet the income requirements for a particular available apartment, they may retain their current place on the waiting list as long as their household income is not less than the minimum or more than the maximum income limits for the community. We also offer (3) one-bedroom and (5) two-bedroom market rate apartments. Income and asset qualifications apply.

- ***How much is the security deposit and application fee?***

The security deposit is equal to one month's rent. There is a small non-refundable application fee per applicant.

- ***Are any utilities included in the rent?***

YES! Rent includes water, sewer, trash, and all electric including heat and air conditioning. You can take comfort in the fact that you'll know what your living expenses will be each month.

- ***Can I have a pet?***

Some pets are permitted, including dogs and cats. An additional pet deposit and monthly pet fee will apply. Pets must be properly licensed and immunized and kept indoors unless they are on a leash and accompanied by their owner.

- ***Are there any services or activities?***

Our Resident Services Coordinator will assist residents to find services they need. The Community Room has many activities are held there. Examples of activities include monthly meetings, potluck dinners, movie or game nights, bingo, music night, speakers and resources, and theme parties around the holidays, as well as health and wellness programs.

- ***Sounds great! How do I apply?***

Applications can be picked up at the community, downloaded from [www.wphuntingdon.org](http://www.wphuntingdon.org) or you may request an application be mailed.

If you speak limited English and need an interpreter, please contact the Management Office and one will be provided free of charge.

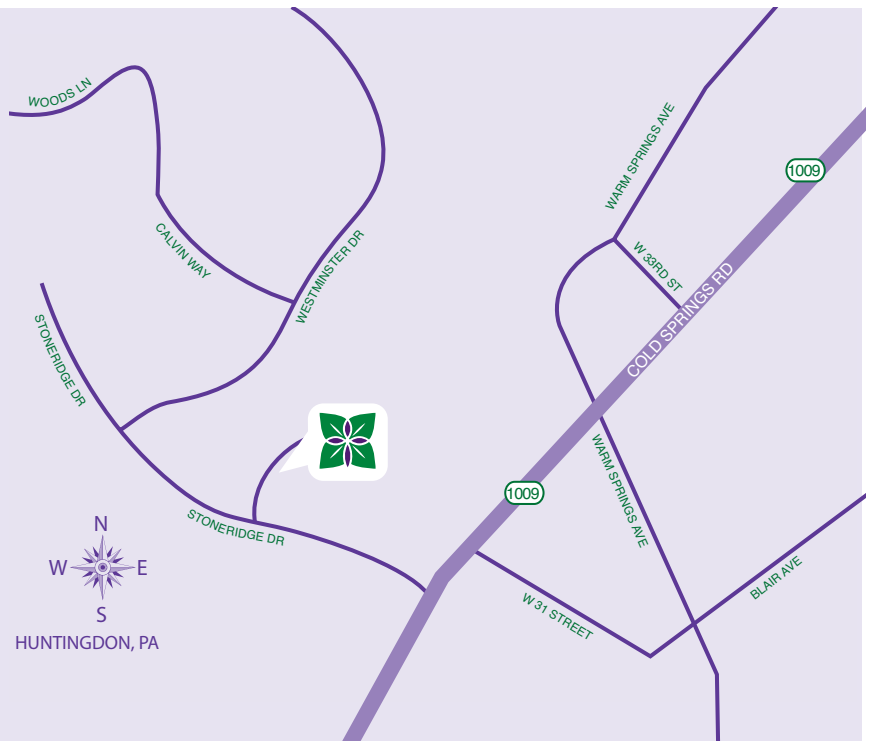
If you or a member of your household has a disability and requires a reasonable accommodation, you may request it at any time during the application process.

## *Our Mission*

Guided by the life and teachings of Jesus, the mission of Presbyterian Senior Living is to provide compassionate, vibrant and supportive communities and services to promote wholeness of body, mind and spirit.

### **About Presbyterian Senior Living**

Founded in 1927 and based in Dillsburg, PA, Presbyterian Senior Living is one of the largest not-for-profit providers of senior housing in the country. More information about Presbyterian Senior Living can be found on the website [www.psl.org](http://www.psl.org). Westminster Place is one of our newest affordable housing communities and is conveniently located near Raystown Lake. The community offers convenient access to essential services, with a hospital and grocery store just one mile away and pharmacy located five miles away from the community.



PRESBYTERIAN  
**SENIOR LIVING**  
Westminster Place

814-644-2100 • TTY #711

149 Beech Lane • Huntingdon, PA 16652

[www.wphuntingdon.org](http://www.wphuntingdon.org)

It is our policy to admit residents without regard to race, color, religion, sex, handicap or national origin and any other federal, state or local fair housing protections. Note: Housing for Older Persons is exempt from the prohibitions against age or familial status.



# Westminster Place at Huntingdon Rate Sheet

## Rental community for those age 62 or older

Rates are subject to change.

### Rental Rates

Bedroom Size	Unit Set-aside <sup>(2)</sup>	Minimum Income <sup>(3)</sup>	Max. Income (1 person)	Max. Income (2 ppl)	Monthly Rent Amount
1	50%	\$19,944	\$31,050	\$35,450	\$831
1	60%	\$22,440	\$37,260	\$42,540	\$935
1	MARKET RATE	\$26,400	Does not apply	Does not apply	\$1,100
2	50%	\$22,080	\$31,050	\$35,450	\$920
2	60%	\$24,000	\$37,260	\$42,540	\$1,000
2	MARKET RATE	\$30,600	Does not apply	Does not apply	\$1,275

### Mobility and Hearing/Vision Accessible Apartments

Bedroom Size	Special Apartment Features <sup>(1)</sup>	Unit Set-aside <sup>(2)</sup>	Minimum Income <sup>(3)</sup>	Max. Income (1 person)	Max. Income (2 ppl)	Monthly Rent Amount
1	Mobility, Hearing/Vision	20%	\$7,968	\$12,420	\$14,180	\$332
1	Mobility, Hearing/Vision	50%	\$19,944	\$31,050	\$35,450	\$831
1	Mobility	60%	\$22,440	\$37,260	\$42,540	\$935
2	Mobility, Hearing/Vision	20%	\$9,576	\$12,420	\$14,180	\$399
2	Mobility	50%	\$22,080	\$31,050	\$35,450	\$920
2	Hearing/Vision	60%	\$24,000	\$37,260	\$42,540	\$1,000

### Rent Includes:

Water, sewer, trash, all electric including heat and air conditioning

- In order to be eligible for an apartment with accessible features, you must require the features of the apartment.
- This apartment community participates in the federal low-income housing tax credit program and claims tax credits in return for renting some or all of the apartments to low-income tenants at a restricted rent based on area median income, a measure used to determine housing affordability. Income limits are available for larger households upon request. This community does not give out waiting list numbers because applicants may qualify for several unit set-asides based on their income. When an apartment becomes available, applicants are selected by date and time order of their waiting list application to determine if they are interested in the available apartment at the designated rent. Applicants who qualify for multiple income set-asides may specify that they only want to be contacted for the lowest set-aside for which they would qualify. Note: "Unit set-aside" is the percentage of where your income falls in relation to area median income for the county where this community is located; it does not mean that you will pay 50% of your income for housing.
- Minimum incomes are determined to ensure that residents do not pay more than 50% of their income for housing expenses. There is no minimum income requirement for holders of Housing Choice or VASH rental assistance vouchers.

Contacte a la comunidad par asistencia linguistica.