



PRESBYTERIAN
SENIOR LIVING
Geneva House

*Affordable Apartment Living
for People 62 and Over*



Geneva House has 64 affordable, comfortable studio and one-bedroom apartments for people 62 and over with low incomes. Located in Center City Scranton where access to medical providers, hospital services, stores, transportation and restaurants is only footsteps away.

SCRANTON, PA

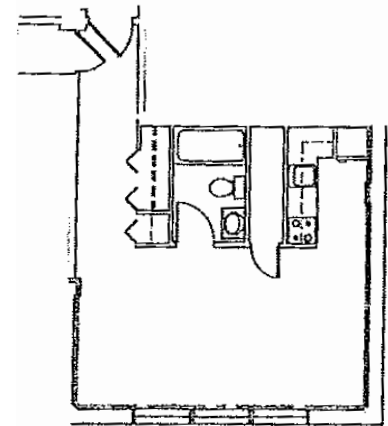
Discover Geneva House

Each energy-efficient apartment includes:

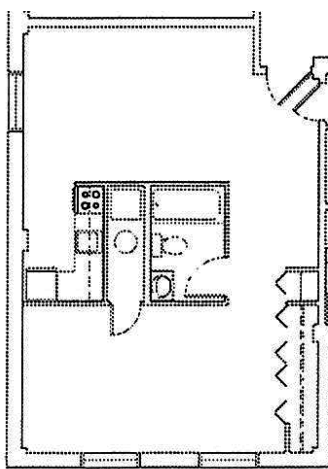
- Well-equipped kitchen
- Individually controlled heating and central air conditioning
- Spacious closets
- Emergency pull cords
- Pre-wired for phone and cable TV

Additional features include:

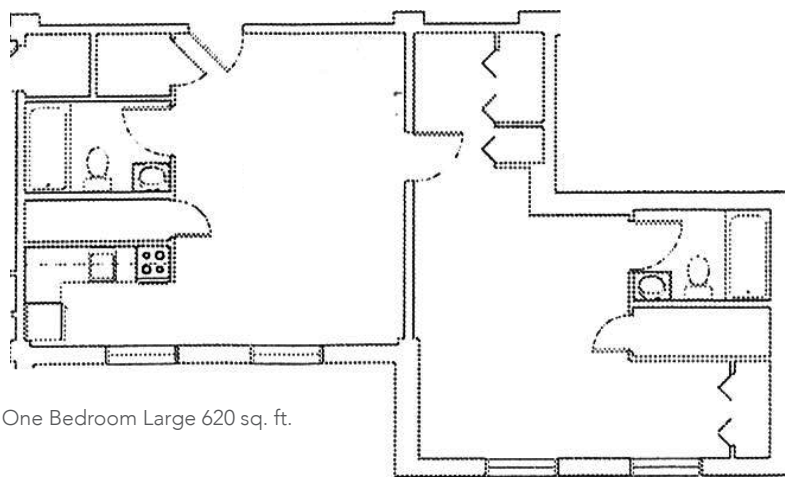
- On-site management and supportive services
- 24-hour emergency maintenance
- Tobacco- and smoke-free community
- Pet friendly
- Hair salon
- Controlled access doors
- On-site laundry facilities featuring front load washers and dryers
- On-site parking (fee applies)
- Front porch patio with seating
- Indoor mailboxes, trash disposal and recycling



Efficiency 406 sq. ft.



One Bedroom 540 sq. ft.



One Bedroom Large 620 sq. ft.

We offer studio, one-bedroom and one-bedroom large floor plans. These are sample layouts for our apartments. We also have accessible apartments for those with mobility and/or hearing/vision impairments.

It is our policy to admit residents without regard to race, color, religion, sex, handicap or national origin and any other federal, state or local fair housing protections. Note: Housing for Older Persons is exempt from the prohibitions against age or familial status.



Frequently Asked Questions

- ***Where is the community?***

Geneva House is an affordable housing community for people, reserved solely for residents 62 years of age or older, located at 323 Adams Avenue, Scranton, PA 18503. For information call 570-347-4885, TTY #711.

- ***How are the rents determined?***

Section 8 determines rent at 30% of a persons adjusted gross income. The income limits vary according to the number of persons in your household. Please call for further details. We also have 15 apartments funded by the RAD Program through the Lackawanna Housing Authority.

- ***How much is the security deposit and application fee?***

The security deposit is one month's total tenant payment (TTP).

- ***Where are the telephone jacks and is cable TV service available?***

There are telephone jacks in each apartment. Cable connectors are provided in each bedroom and the living room.

- ***Is there enough storage?***

Each apartment home has ample closet space. There is ample cabinet and counter space in the kitchens.

- ***What about laundry facilities?***

The laundry room features card-operated washers and dryers. It's open 24 hours a day for our residents' convenience.

- ***Are window coverings provided?***

Mini blinds are provided. Residents are welcome to further install their own window treatments.

- ***Is there meal service?***

Meals on Wheels will provide home-delivered meals to eligible residents. Residents may also take advantage of the luncheon programs provided at local senior centers. Mom's Meals delivery and grocery delivery from local markets is available.

- ***How about transportation?***

Inexpensive transportation services are available for residents via COLTS buses and from Lackawanna County Transit for those that qualify. Geneva House is also within a block from markets, restaurants, pharmacies and banks. Some of which deliver to Geneva House.

- ***Are there any services or activities?***

Our Supportive Services Coordinator will help residents learn about resources and services that may be available to those who are eligible. The Supportive Services Coordinator will also assist residents with planning and implementing activities. Examples of activities include monthly Resident's Association meetings, potluck dinners, movie or game nights, bingo, music nights, speakers and resources, themed parties around the holidays, and health and wellness programs..

- ***Sounds great! How do I apply?***

Give us a call at 570-347-4885, TTY #711 and we'll be happy to schedule an appointment for you to submit an application.

Our Mission

Guided by the life and teachings of Jesus, the mission of Presbyterian Senior Living is to provide compassionate, vibrant and supportive communities and services to promote wholeness of body, mind and spirit.

About Presbyterian Senior Living

Founded in 1927 and based in Dillsburg, PA, Presbyterian Senior Living is one of the largest not-for-profit providers of senior care in the country, with 30 locations in Pennsylvania, Ohio, Maryland, and Delaware. Presbyterian Senior Living fulfills its charitable purpose and mission by providing a full range of high-quality healthcare, housing, and other related community services directed primarily to seniors. More information about Presbyterian Senior Living can be found on the web site www.presbyterianseniorliving.org.



**PRESBYTERIAN
SENIOR LIVING**
Geneva House

323 Adams Avenue • Scranton, PA 18503-1609
570-347-4885 • TTY #711 • www.genevahouse.org

Geneva House Rate Sheet

Rental Rates

All Apartments

Rent is based on 30% of adjusted gross income* for Section 8 apartments.
Please contact the Management Office for additional information.

*Mobility accessible apartments available.

Rent Includes:

Electric, water, sewer, trash removal

For Comfort and Convenience:

- Wall-to-wall carpeting
- Individually controlled heating and central air conditioning
- Mini blinds for each window
- Well-equipped kitchen
- Community Room
- Library with computer and internet access
- Lounge with TV and piano
- Salon
- Garden
- Smoke alarms
- Emergency pull cord system
- 24-hour emergency maintenance service
- Controlled-access building
- On-site management, maintenance and supportive service coordination
- Pet friendly
- Tobacco- and smoke-free community

Annual Income Limits*

Number of Persons	1 Person	2 Persons
Extremely Low Income	\$16,450	\$19,720
Very Low Income	\$27,450	\$31,400
Low Income (RADD Apartments ONLY)	\$43,900	\$50,200

*Income limits apply. Rental rates and income limits are subject to change. Please contact us for further information. Contacte a la comunidad par asistencia linguistica.

It is our policy to admit residents without regard to race, color, religion, sex, handicap or national origin and any other federal, state or local fair housing protections. Note: Housing for Older Persons is exempt from the prohibitions against age or familial status.



*Revised 5/15/2023