



PRESBYTERIAN  
**SENIOR LIVING**  
LongCrest Apartments

*Affordable Apartment Living  
for Those Age 62 and Older*



LongCrest offers 52 senior apartments for those ages 62 and older. These spacious apartments offer between 673 and 890 square feet of well-designed living space with easy access to all the area has to offer.

**LANCASTER, PA**

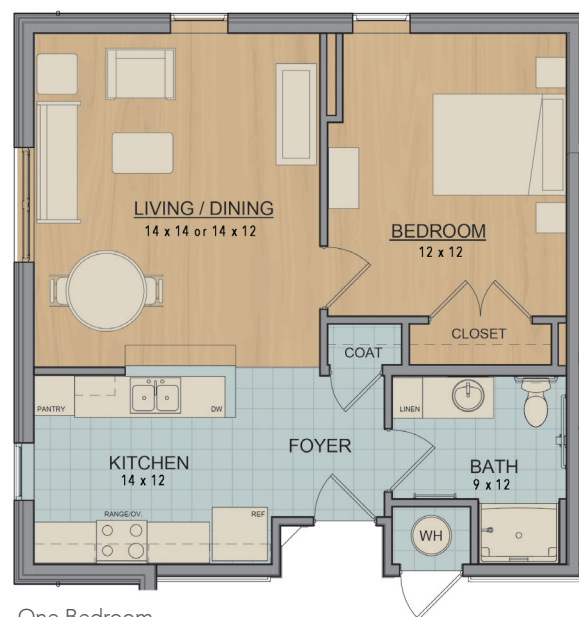
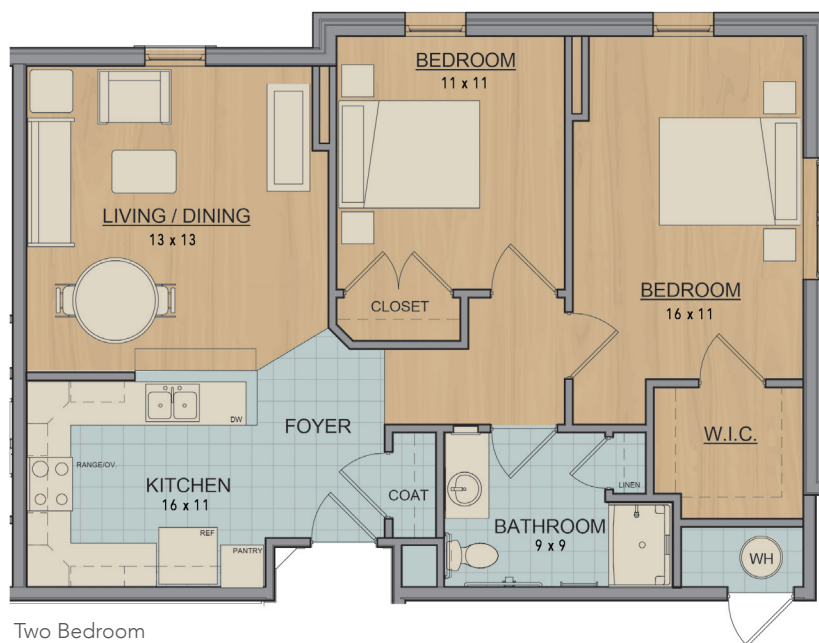
# Discover LongCrest

## Each energy-efficient apartment includes:

- Well-equipped kitchen
- Individually controlled heating and central air conditioning
- Spacious closets
- Emergency pull cords
- Pre-wired for phone and cable TV
- Walk-in Showers in every apartment

## Additional features include:

- Resident service coordination
- Interior and exterior apartment maintenance
- Tobacco- and smoke-free community
- Pet friendly
- Ample free parking
- On-site laundry facilities featuring front load washers and dryers
- Additional storage
- Large community room with kitchen, fitness center, reading room, two libraries, learning center and lots of beautiful porch space and sun rooms



We offer one and two-bedroom floor plans. These are sample layouts for our apartments. We also have accessible apartments for those with mobility and/or hearing/vision impairments.



# Frequently Asked Questions

- ***Where is the community?***

LongCrest is an affordable housing community for those 62 years of age or older, located in the city of Lancaster. The Management Office address is 924 West Walnut Street, Lancaster, PA 17603. Our telephone number is 717-358-9600, TTY #711.

- ***Are there income guidelines to live at LongCrest?***

Rent and income limits have been established under federal program guidelines based on household size. Qualifying income limits and rents are adjusted annually. Housing Choice and VASH Vouchers are accepted.

Please Note: Apartments within the community have different income limits. An applicant's income-eligibility must be determined as it relates to an available apartment. If an applicant does not meet the income requirements for a particular available apartment, they may retain their current place on the waiting list as long as their household income is not less than the minimum or more than the maximum income limits for the community.

- ***How much is the security deposit and application fee?***

The security deposit is equal to one month's rent. There is a small non-refundable application fee per applicant.

- ***Are any utilities included in the rent?***

YES! Rent includes water, sewer, trash, and all electric including heat and air conditioning. You can take comfort in the fact that you'll know what your living expenses will be each month.

- ***Is there enough storage?***

Each apartment has ample closet space. Storage lockers are available for additional storage needs.

- ***Are window coverings provided?***

Mini blinds are provided on each window. Residents are welcome to further install their own window treatments.

- ***Are there any services or activities?***

Our Resident Services Coordinator will help residents learn about resources and services that may be available to those who are eligible. The Resident Services Coordinator will also assist residents with planning and implementing activities. Examples of activities include monthly potluck dinners, movie or game nights, bingo, music nights, speakers and resources, themed parties around the holidays, and health and wellness programs.

- ***Sounds great! How do I apply?***

Give us a call at 717-358-9600 or TTY #711 and we'll be happy to email or mail you an application or tell you where you can pick one up to avoid waiting to receive it in the mail. If you speak Limited English and need an interpreter, please contact the Management Office and one will be provided free of charge. If you or a member of your household has a disability and requires a reasonable accommodation, you may request it at any time during the application process.

## ***Our Mission***

Guided by the life and teachings of Jesus, the mission of Presbyterian Senior Living is to provide compassionate, vibrant and supportive communities and services to promote wholeness of body, mind and spirit.

## **About Presbyterian Senior Living**

Founded in 1927 and based in Dillsburg, PA, Presbyterian Senior Living is one of the largest not-for-profit providers of senior care in the country, with 30 locations in Pennsylvania, Ohio, Maryland, and Delaware. Presbyterian Senior Living fulfills its charitable purpose and mission by providing a full range of high-quality healthcare, housing, and other related community services directed primarily to seniors. More information about Presbyterian Senior Living can be found on the web site [www.presbyterianseniorliving.org](http://www.presbyterianseniorliving.org).



## **Preserving the Past, Building a Promising Future**

**The original Long Home was built in 1905 to fulfill the legacy of Judge Long's estate to serve seniors with limited income from the Lancaster area.**

It is our policy to admit residents without regard to race, color, religion, sex, handicap or national origin and any other federal, state or local fair housing protections. Note: Housing for Older Persons is exempt from the prohibitions against age or familial status.



# LongCrest Rate Sheet

## Rental community for those age 62 or older

Rates are subject to change.

### Rental Rates

Bedroom Size	Unit Set-aside	Minimum Income	Maximum Income (1 person)	Maximum Income (2 ppl)	Monthly Rent Amount
1	20%	\$9,432	\$14,700	\$16,800	\$393
1	50%	\$23,616	\$36,750	\$42,000	\$984
1	60%	\$28,344	\$44,100	\$50,400	\$1,181
2**	20%	\$11,328	\$14,700	\$16,800	\$472
2	50%	\$28,344	\$36,750	\$42,000	\$1,181
2	60%	\$34,008	\$44,100	\$50,400	\$1,417

\*\*Resident MUST require mobility or hearing/vision accessible features of the apartment.

### Rent Includes:

Electric, water, sewer and trash removal

Minimum incomes are determined to ensure that residents do not pay more than 50% of their income for housing expenses. There is no minimum income requirement for holders of Housing Choice or VASH rental assistance vouchers.

This apartment community participates in the federal low-income housing tax credit program and claims tax credits in return for renting some or all of the apartments to low-income tenants at a restricted rent based on area median income, a measure used to determine housing affordability. Income limits are available for larger households upon request. This community does not give out waiting list numbers because applicants may qualify for several unit set-asides based on their income. When an apartment becomes available, applicants are selected by date and time order of their waiting list application to determine if they are interested in the available apartment at the designated rent. Applicants who qualify for multiple income set-asides may specify that they only want to be contacted for the lowest set-aside for which they would qualify. Note: "Unit set-aside" is the percentage of where your income falls in relation to area median income for the county where this community is located; it does not mean that you will pay 50% of your income for housing. Rates are subject to change.



717-358-9600 • TTY #711

924 W. Walnut Street • Lancaster, PA 17603

[www.longcrest.org](http://www.longcrest.org)

Contacte a la comunidad para asistencia lingüística.

It is our policy to admit residents without regard to race, color, religion, sex, handicap or national origin and any other federal, state or local fair housing protections. Note: Housing for Older Persons is exempt from the prohibitions against age or familial status.



\*Revised 4/1/25