



PRESBYTERIAN  
**SENIOR LIVING**  
Westminster Place

*Affordable Apartment Living  
for Those Age 55 and Older*



Westminster Place at Carroll Village offers one and two bedroom apartments for those age 55 and older. Its location at Route 15 and Route 74 provides easy access to all that the Dillsburg area has to offer.

**DILLSBURG, PA**

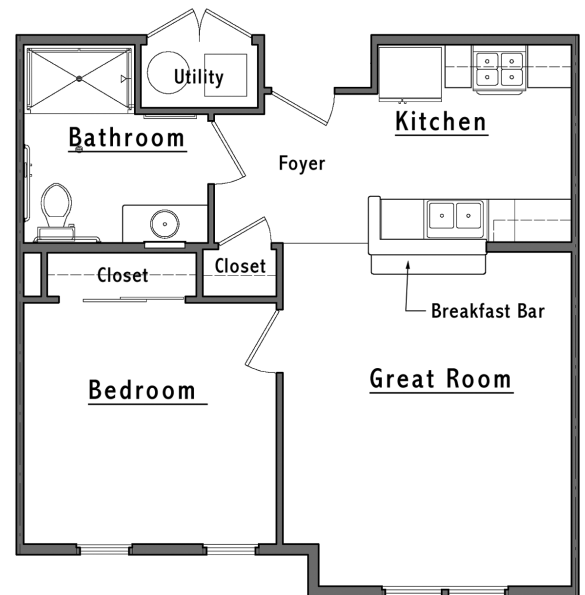
# Discover Westminster Place at Carroll Village

## Each energy-efficient apartment includes:

- Well-equipped kitchen
- Individually controlled heating and central air conditioning
- Smoke alarms
- Pre-wired for phone and cable TV
- Mini blinds are provided

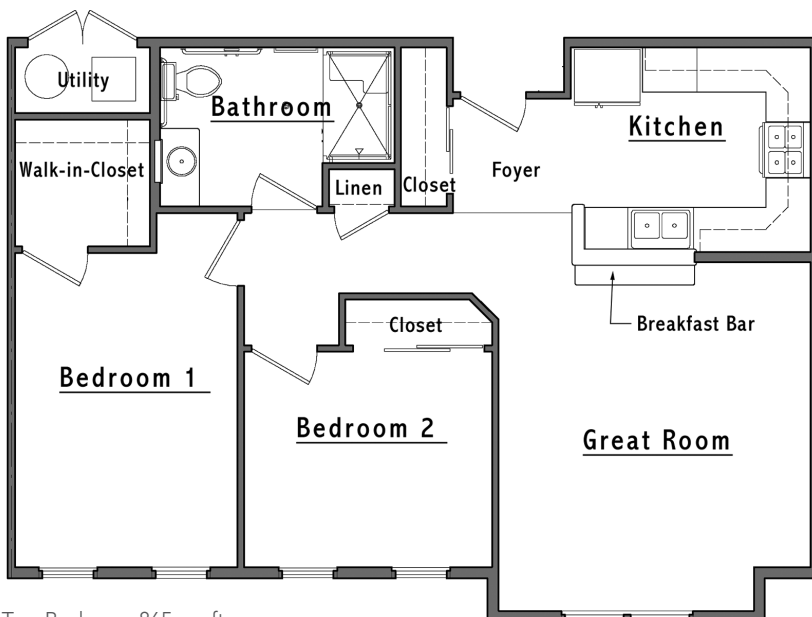
## Additional features include:

- Fitness Center and Library with internet service
- Handicap accessible apartments available
- Pet friendly
- Community Room
- Free indoor parking space
- Storage units
- Tobacco and smoke-free community
- Resident services coordination
- On-site laundry facilities located on each floor



One Bedroom 650 sq. ft.

We offer one-bedroom and two-bedroom floor plans. These are sample layouts for our apartments. We also have accessible apartments for those with mobility and/or hearing/vision impairments.



Two Bedroom 865 sq. ft.

# Frequently Asked Questions

- ***Where is the community?***

Westminster Place at Carroll Village is an affordable housing community, reserved solely for those 55 years of age or older, located at Two Trinity Drive West, Dillsburg, PA. For information call 717-432-1670, TTY #711.

- ***How is income and rent eligibility determined?***

Qualifying income limits and rents are adjusted annually and based on household income eligibility and apartment designation. Incomes below the minimum shown may be considered with a qualifying lease guarantor. Housing Choice and VASH vouchers are accepted. Please call for further details.

Please Note: Apartments within the community have different income limits. An applicant's income-eligibility must be determined as it relates to an available apartment. If an applicant does not meet the income requirements for a particular available apartment, they may retain their current place on the waiting list as long as their household income is not less than the minimum or more than the maximum income limits for the community.

- ***How much is the security deposit and application fee?***

The security deposit is equal to one month's rent. There is a small non-refundable application fee per applicant.

- ***Are any utilities included in the rent?***

YES! Rent includes water, sewer, trash, gas heat and all electric including lights, appliances and air conditioning. You can take comfort in the fact that you'll know what your living expenses will be each month.

- ***Can I have a pet?***

Some pets are permitted, including dogs and cats. Please contact the Community Manager for further information. An additional pet deposit and monthly pet fee will apply. Pets must be properly licensed and immunized and kept indoors unless they are on a leash and accompanied by their owner.

- ***What will it be like living at Westminster Place at Carroll Village?***

There is plenty to stay occupied at Westminster Place! The Resident Services Coordinator is available to help residents find services they may need. We encourage residents to be involved with the Resident Association. Residents can meet neighbors in the community room for community gatherings or games. The Community Room has a television with cable TV and many activities are held there. Examples of activities include monthly meetings, potluck dinners, movie or game nights, bingo, music night, speakers and resources, and theme parties around the holidays, as well as health and wellness programs. The Community Room is also available to be reserved for your private functions. Residents can stay in shape in the fitness center or enjoy a quiet moment on our patio chairs. We offer parking in our underground parking garage, so you never have to worry about clearing snow off of your car.

# Frequently Asked Questions

- ***Is there storage?***

Each apartment home has a large closet in the entry, a linen closet, and each bedroom has a closet. Bathrooms have a vanity and there is ample cabinet and counter space in the kitchens.

- ***Is there a meal service?***

Meals on Wheels will provide home-delivered meals to eligible residents. The Marketplace Café serves a variety of food with daily/weekly specials. Residents may also take advantage of the luncheon program provided at the Dillsburg Senior Center.

- ***Sounds great! How do I apply?***

Give us a call at 717-432-1670 or TTY #711 and we'll be happy to mail you an application or tell you where to come for faster service.

If you speak limited English and need an interpreter, please contact the Management Office and one will be provided free of charge.

If you or a member of your household has a disability and requires a reasonable accommodation, you may request it at any time during the application process.



## *Our Mission*

Guided by the life and teachings of Jesus, the mission of Presbyterian Senior Living is to provide compassionate, vibrant and supportive communities and services to promote wholeness of body, mind and spirit.

## **About Presbyterian Senior Living**

Founded in 1927 and based in Dillsburg, PA, Presbyterian Senior Living is one of the largest not-for-profit providers of senior care in the country, with 30 locations in Pennsylvania, Ohio, Maryland, and Delaware. Presbyterian Senior Living fulfills its charitable purpose and mission by providing a full range of high-quality healthcare, housing, and other related community services directed primarily to seniors. More information about Presbyterian Senior Living can be found on the web site [www.presbyterianseniorliving.org](http://www.presbyterianseniorliving.org).



**PRESBYTERIAN  
SENIOR LIVING**  
Westminster Place

Two Trinity Drive West • Dillsburg, PA 17019  
717-432-1670 • TTY #711 • [www.carrollvillage.org](http://www.carrollvillage.org)

# Westminster Place at Carroll Village Rate Sheet

## Rental community for those age 55 or older

Rates are subject to change.

### Rental Rates

Bedroom Size	Unit Set-aside <sup>(2)</sup>	Minimum Income <sup>(3)</sup>	Maximum Income (1 Person)	Maximum Income (2 People)	Monthly Rent Amount
1	50%	\$20,880	\$36,800	\$42,050	\$870
1	60%	\$21,360	\$44,160	\$50,460	\$890
2	60%	\$27,360	\$44,160	\$50,460	\$1,140

### Mobility and Hearing/Vision Accessible Apartments

Bedroom Size	Special Apartment Features <sup>(1)</sup>	Unit Set-aside <sup>(2)</sup>	Minimum Income <sup>(3)</sup>	Maximum Income (1 Person)	Maximum Income (2 People)	Monthly Rent Amount
1	Mobility	20%	\$9,456	\$14,720	\$16,820	\$394
1	Hearing/Vision	50%	\$20,880	\$36,800	\$42,050	\$870
2	Mobility	20%	\$11,352	\$14,720	\$16,820	\$473

### Rent Includes:

Gas heat and hot water, electric, water, sewer, trash removal, underground parking, and laundry facilities

1. In order to be eligible for an apartment with special features, you must require the features of the apartment.
2. This apartment community participates in the federal low-income housing tax credit program and claims tax credits in return for renting some or all of the apartments to low-income tenants at a restricted rent based on area median income, a measure used to determine housing affordability. Income limits are available for larger households upon request. This community does not give out waiting list numbers because applicants may qualify for several unit set-asides based on their income. When an apartment becomes available, applicants are selected by date and time order of their waiting list application to determine if they are interested in the available apartment at the designated rent. Applicants who qualify for multiple income set-asides may specify that they only want to be contacted for the lowest set-aside for which they would qualify. Note: "Unit set-aside" is the percentage of where your income falls in relation to area median income for the county where this community is located; it does not mean that you will pay 50% of your income for housing.
3. Minimum incomes are determined to ensure that residents do not pay more than 50% of their income for housing expenses. There is no minimum income requirement for holders of Housing Choice or VASH rental assistance vouchers.

Contacte a la comunidad par asistencia linguistica.

It is our policy to admit residents without regard to race, color, religion, sex, handicap or national origin and any other federal, state or local fair housing protections. Note: Housing for Older Persons is exempt from the prohibitions against age or familial status.



\*Revised 6/1/2024