



PRESBYTERIAN  
**SENIOR LIVING**  
Westminster Place

*Affordable Apartment Living  
for Those Age 55 and Older*



Westminster Place at Parkesburg offers one and two-bedroom apartments for those age 55 and older. We are located in the heart of the Brandywine Valley: close to Lancaster County and Philadelphia, PA, Wilmington, DE, and Baltimore, MD.

**PARKESBURG, PA**

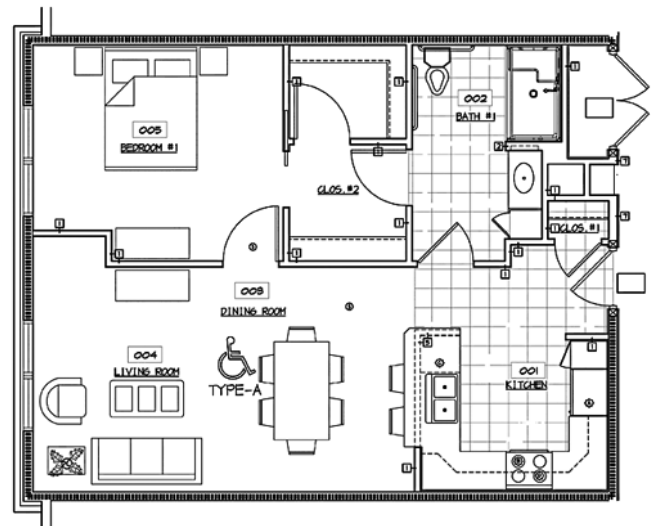
# Discover Westminster Place at Parkesburg

## Each energy-efficient apartment includes:

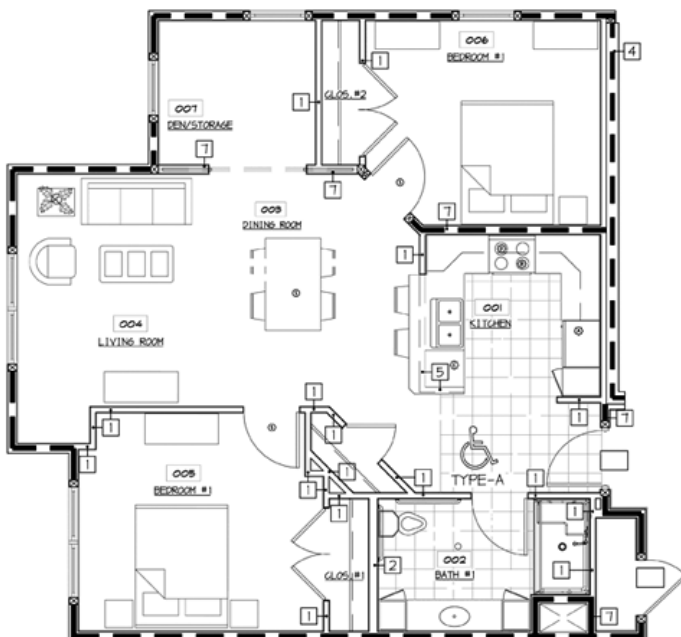
- Well-equipped kitchen with microwaves and dishwashers
- Individually controlled heating and central air conditioning
- Smoke alarms
- Mini blinds are provided
- Pre-wired for phone and cable TV

## Additional features include:

- Fitness Center
- Mobility and hearing/vision accessible apartments available
- Pet friendly
- Community Room
- Computer Center with internet access
- Tobacco- and smoke-free community
- Resident services coordination
- On-site laundry facilities located on each floor



One Bedroom 741 sq. ft.



Two Bedroom 976 sq. ft.

We offer one-bedroom and two-bedroom floor plans. These are sample layouts for our apartments. We also have accessible apartments for those with mobility and/or hearing/vision impairments.

It is our policy to admit residents without regard to race, color, religion, sex, handicap or national origin and any other federal, state or local fair housing protections. Note: Housing for Older Persons is exempt from the prohibitions against age or familial status.





# Frequently Asked Questions

- ***Where is the community?***

Westminster Place at Parkesburg is an affordable housing community, reserved solely for those 55 years of age or older, located at 320 West First Avenue, Parkesburg, PA 19365. For information call 610-857-1416, TTY #711.

- ***How is income and rent eligibility determined?***

Rent and income limits have been established under federal program guidelines based on household size. Qualifying income limits and rents are adjusted annually. Housing Choice and VASH Vouchers are accepted.

Please Note: Apartments within the community have different income limits. An applicant's income-eligibility must be determined as it relates to an available apartment. If an applicant does not meet the income requirements for a particular available apartment, they may retain their current place on the waiting list as long as their household income is not less than the minimum or more than the maximum income limits for the community.

- ***How much is the security deposit and application fee?***

The security deposit is equal to one month's rent. There is a small non-refundable application fee per applicant.

- ***Are any utilities included in the rent?***

YES! Rent includes water, sewer, trash and all electric, including heat and air conditioning. You can take comfort in the fact that you'll know what your living expenses will be each month.

- ***Can I have a pet?***

Some pets are permitted, including dogs and cats. Please contact the Community Manager for further information. An additional pet deposit and monthly pet fee will apply. Pets must be properly licensed and immunized and kept indoors unless they are on a leash and accompanied by their owner.

# Frequently Asked Questions

- ***What will it be like living at Westminster Place at Parkesburg?***

There is plenty to do at Westminster Place at Parkesburg! Residents can meet neighbors in the community room for community gatherings or games. They can stay in shape in the fitness center or they can enjoy a quiet moment on our patio benches. There is also a computer center with internet access that is available to our residents free of charge!

- ***Are there any services or activities?***

The Resident Services Coordinator is available to help residents find services they may need. The Community Room has a television with cable TV and many activities are held there. Examples of activities include potluck dinners, movie or game nights, bingo, music night, speakers and resources and theme parties around the holidays, charity drives as well as health and wellness programs.

- ***Is there storage?***

Each apartment home has a large closet in the kitchen, a linen closet, and a closet in each bedroom. All bathrooms have a vanity and there is ample cabinet and counter space in the kitchen.

- ***Is there meal service?***

While the community doesn't offer any meal services, residents are encouraged to speak with the Resident Services Coordinator to see if you qualify for any local services.

- ***Sounds great! How do I apply?***

Give us a call at 610-857-1416, TTY #711 and we'll be happy to mail you an application or tell you where to come for faster service.



If you speak limited English and need an interpreter, please contact the Management Office and one will be provided free of charge.

If you or a member of your household has a disability and requires a reasonable accommodation, you may request it at any time during the application process.



## *Our Mission*

Guided by the life and teachings of Jesus, the mission of Presbyterian Senior Living is to provide compassionate, vibrant and supportive communities and services to promote wholeness of body, mind and spirit.

## **About Presbyterian Senior Living**

Founded in 1927 and based in Dillsburg, PA, Presbyterian Senior Living is one of the largest not-for-profit providers of senior care in the country, with 30 locations in Pennsylvania, Ohio, Maryland, and Delaware. Presbyterian Senior Living fulfills its charitable purpose and mission by providing a full range of high-quality healthcare, housing, and other related community services directed primarily to seniors. More information about Presbyterian Senior Living can be found on the web site [www.presbyterianseniorliving.org](http://www.presbyterianseniorliving.org).



**PRESBYTERIAN  
SENIOR LIVING**  
Westminster Place

320 W. First Avenue • Parkesburg, PA 19365  
610-857-1416 • TTY #711 • [www.westminsterplaceparkesburg.org](http://www.westminsterplaceparkesburg.org)

It is our policy to admit residents without regard to race, color, religion, sex, handicap or national origin and any other federal, state or local fair housing protections. Note: Housing for Older Persons is exempt from the prohibitions against age or familial status.



# Westminster Place at Parkesburg Rate Sheet

## Rental community for those age 55 or older

Rates are subject to change.

### Rental Rates

Bedroom Size	Unit Set-aside <sup>(2)</sup>	Minimum Income <sup>(3)</sup>	Maximum Income (1 Person)	Maximum Income (2 People)	Monthly Rent Amount
1	40%	\$21,504	\$33,440	\$38,240	\$896
1	50%	\$26,880	\$41,800	\$47,800	\$1,120
1	60%	\$31,200	\$50,160	\$57,360	\$1,300
2	50%	\$31,200	\$41,800	\$47,800	\$1,300
2	60%	\$34,800	\$50,160	\$57,360	\$1,450

### Mobility and Hearing/Vision Accessible Apartments

Bedroom Size	Unit Set-aside <sup>(2)</sup>	Minimum Income <sup>(3)</sup>	Maximum Income (1 Person)	Maximum Income (2 People)	Monthly Rent Amount
1	20%	\$10,752	\$16,720	\$19,120	\$448
2	20%	\$12,888	\$16,720	\$19,120	\$537

### Rent Includes:

Heat, electric, water, sewer, trash removal and free parking

1. In order to be eligible for an apartment with special features, you must require the features of the apartment.
2. This apartment community participates in the federal low-income housing tax credit program and claims tax credits in return for renting some or all of the apartments to low-income tenants at a restricted rent based on area median income, a measure used to determine housing affordability. Income limits are available for larger households upon request. This community does not give out waiting list numbers because applicants may qualify for several unit set-asides based on their income. When an apartment becomes available, applicants are selected by date and time order of their waiting list application to determine if they are interested in the available apartment at the designated rent. Applicants who qualify for multiple income set-asides may specify that they only want to be contacted for the lowest set-aside for which they would qualify. Note: "Unit set-aside" is the percentage of where your income falls in relation to area median income for the county where this community is located; it does not mean that you will pay 50% of your income for housing.
3. Minimum incomes are determined to ensure that residents do not pay more than 50% of their income for housing expenses. There is no minimum income requirement for holders of Housing Choice or VASH rental assistance vouchers.

Contacte a la comunidad par asistencia linguistica.

It is our policy to admit residents without regard to race, color, religion, sex, handicap or national origin and any other federal, state or local fair housing protections. Note: Housing for Older Persons is exempt from the prohibitions against age or familial status.



\*Revised 4/1/25