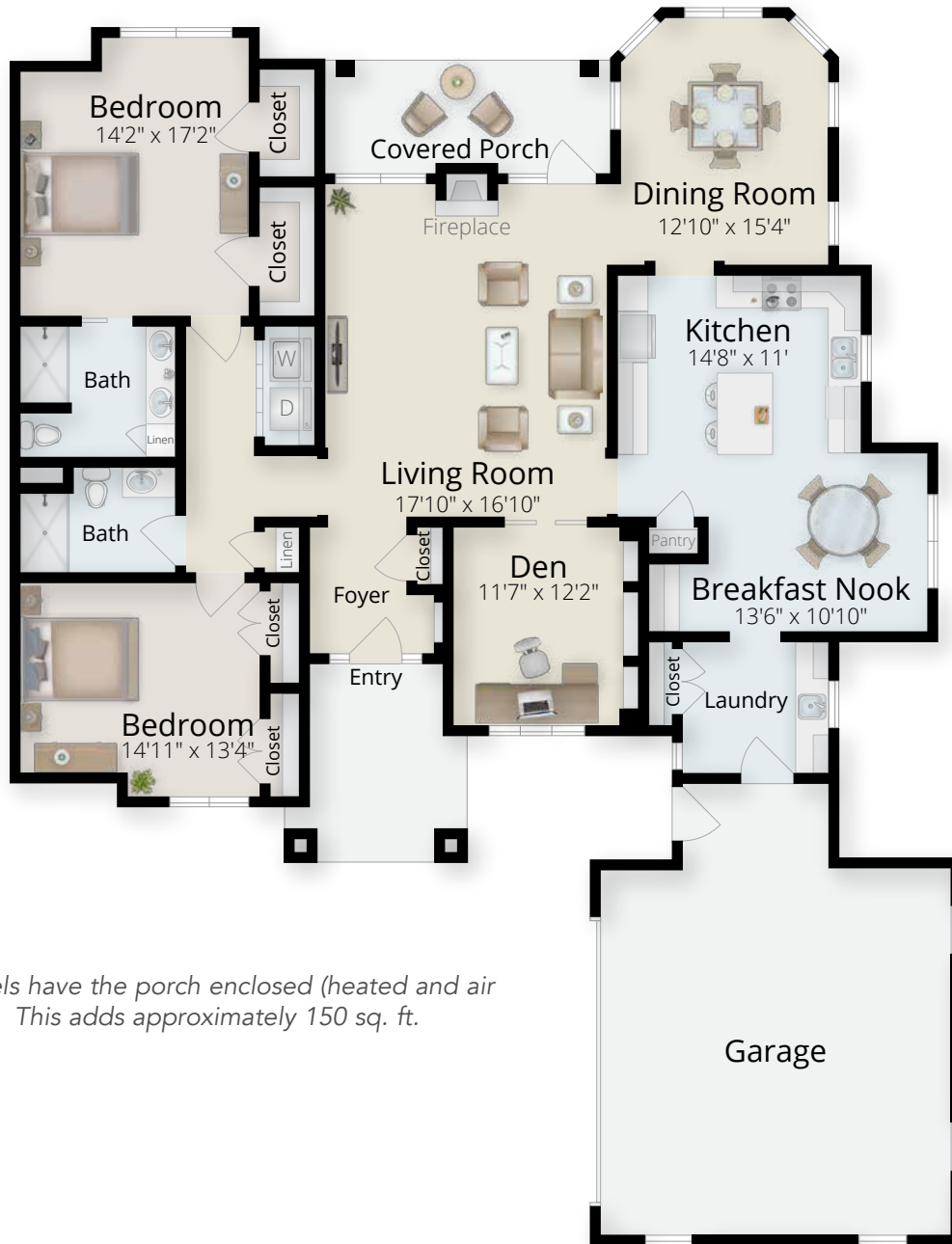


Carriage Home

2 Bedroom/2 Bath with Den

(Approx. 2,091 SF)

Note: Floor plans illustrate a general plan which is subject to future change and revisions. Dimensions, boundaries and furniture or object position locations are for illustrative purposes only and are not intended to be exact.



+ Deluxe models have the porch enclosed (heated and air conditioned). This adds approximately 150 sq. ft.



PRESBYTERIAN
SENIOR LIVING
Ware Presbyterian Village

7 E. Locust Street • Oxford, PA 19363

www.psl.org/ware