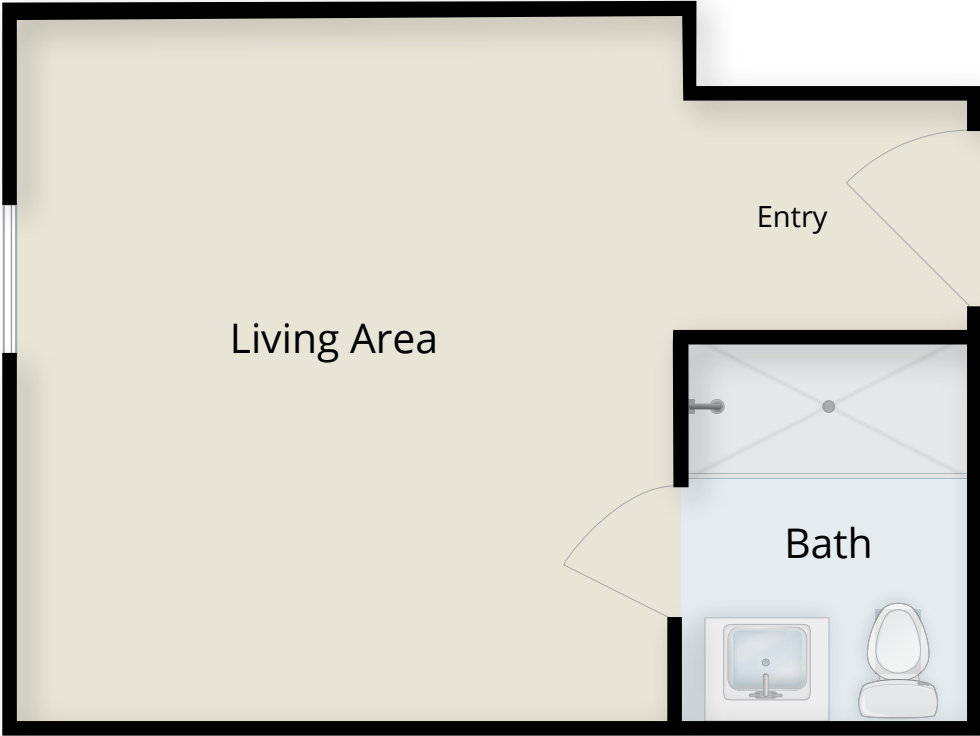


# Personal Care Private Suite

(Approx. 238-308 SF)

Note: Floor plans illustrate a general plan which is subject to future change and revisions. Dimensions, boundaries and furniture or object position locations are for illustrative purposes only and are not intended to be exact.



PRESBYTERIAN  
**SENIOR LIVING**  
Presbyterian Home

810 Louisa Street • Williamsport, PA 17701

[www.psl.org/williamsport](http://www.psl.org/williamsport)