

# EXCEPTIONAL *Value.* *Winning* LOCATION.

## WELCOME TO HERITAGE RUN AT STADIUM PLACE.

Heritage Run at Stadium Place, a new rental senior living community developed by Presbyterian Senior Living, in partnership with GEDCO (Govans Ecumenical Development Corporation), offers maintenance-free apartments reserved for those aged 62 and older.

Thoughtfully designed, Heritage Run elevates senior living in Baltimore to new heights of style and service in one of the city's most cherished and celebrated areas . . . the former site of Memorial Stadium.

*It's truly an exceptional value in a winning location.*



  
a PRESBYTERIAN SENIOR LIVING community



# MONTHLY RENTAL FEES

## APARTMENT

## MONTHLY RENT

One-Bedroom .....	\$1,700 to \$1,850
One-Bedroom with Den .....	\$2,000 to \$2,050
Two-Bedroom .....	\$2,150 to \$2,350
One-Time Community Maintenance Fee.....	\$2,000

*\*Above pricing is provided as a range for each unit style.  
Specific features will dictate the price of each apartment.*

The above monthly rents include the following services and features:

- Basic utilities – heat, electric, water, sewer
- Off-street parking
- In unit laundry
- Private community patio
- Great Room/Community Room with catering kitchen and Wifi
- On-site Fitness Center and reduced membership at the Harry and Jeanette Weinberg Family Center Y at Stadium Place
- Emergency call system
- Ongoing household and appliance maintenance
- Controlled entry system and security cameras
- On-site storage area
- Scheduled transportation
- Regularly scheduled activities
- Priority access to skilled nursing and rehabilitation services at the Nursing and Rehabilitation Center at Stadium Place

*Heritage Run is a pet-friendly and tobacco-free community.*



EXCEPTIONAL *Value.*  
*Winning* LOCATION.



a PRESBYTERIAN SENIOR LIVING community

1080 East 33<sup>rd</sup> Street  
Baltimore, Maryland 21218

410-235-1706 | [www.heritagerun.org](http://www.heritagerun.org)



It is our policy to admit residents without regard to race, color, national origin, age, ancestry, sex, religious creed, handicap or disability.

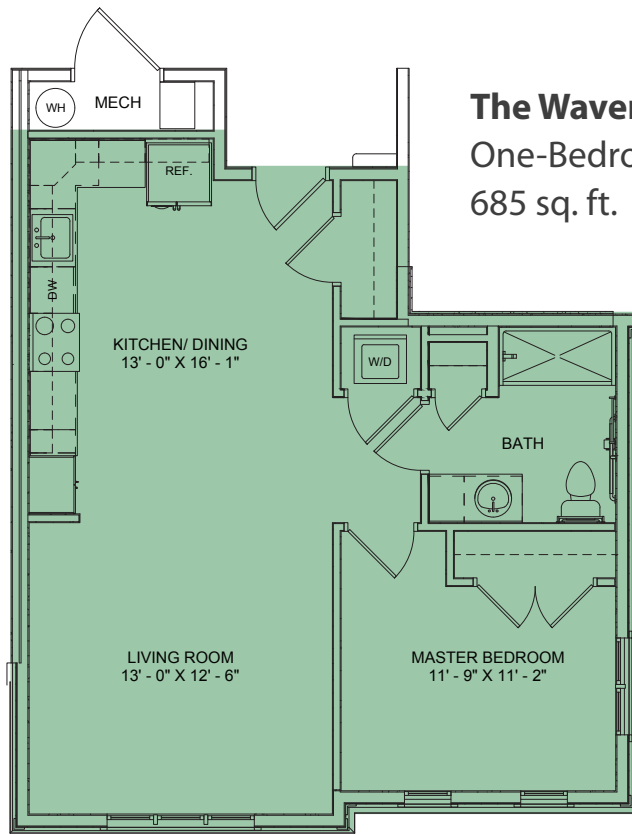
Effective 1/2019

## ONE- & TWO-BEDROOM APARTMENTS

Both one- and two-bedroom apartments are available in a variety of floor plans designed to suit your individual needs and preferences.

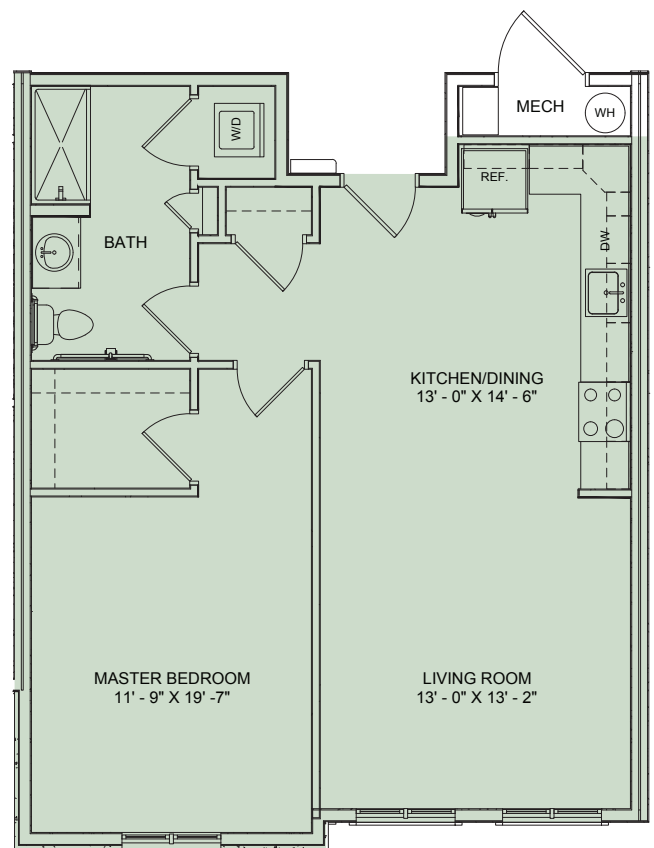
Apartment features include:

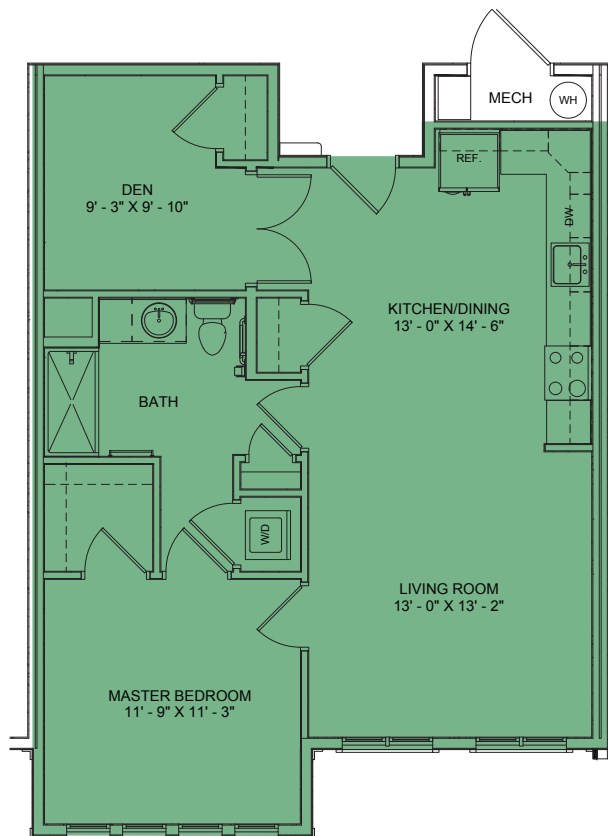
- In-unit washer & dryer
- Wall-to-wall carpeting
- Ample closet space
- Individually controlled thermostat
- All appliances, including dishwasher & microwave oven
- Solid wood cabinetry
- Blinds on all windows



**The Waverly**  
One-Bedroom, One-Bathroom  
685 sq. ft.

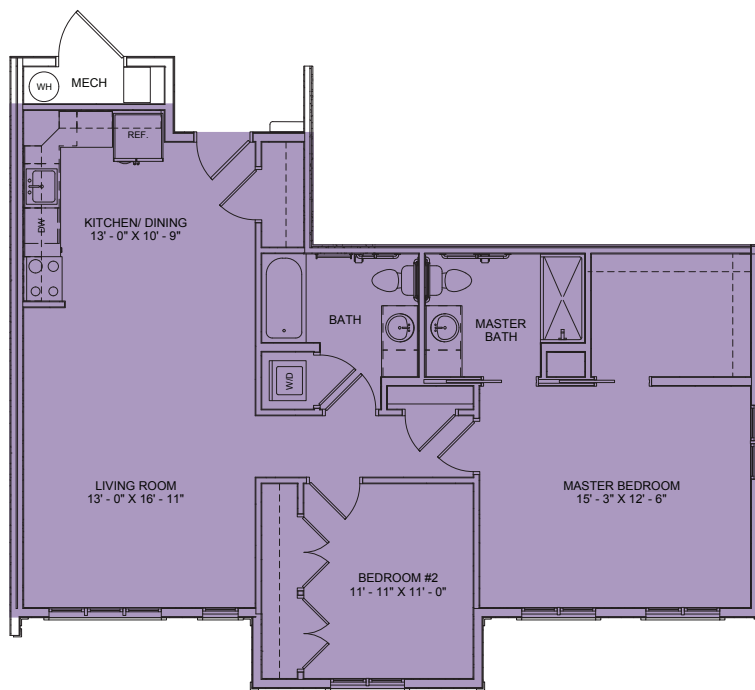
**The Hampden**  
One-Bedroom,  
One-Bathroom  
790 sq. ft.





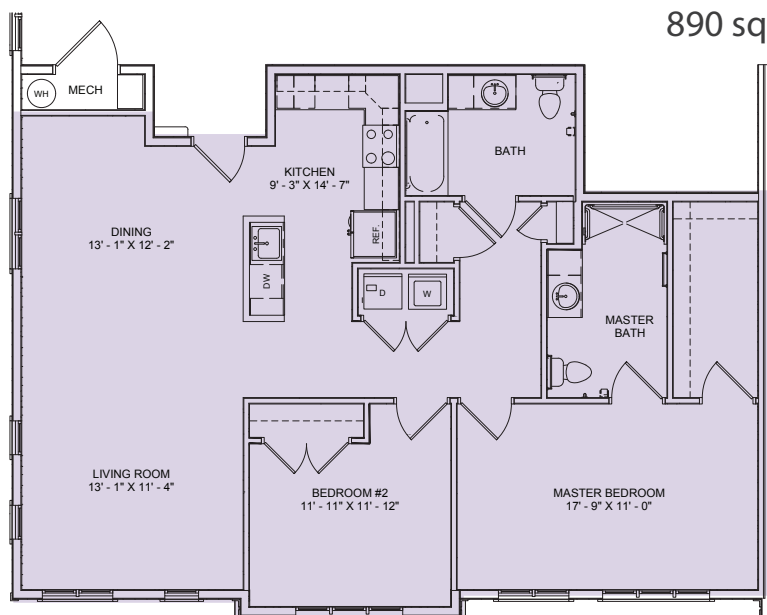
### The Fairmont

One-Bedroom plus den, One-Bathroom  
825 sq. ft.



### The Mayfield

Two-Bedroom, Two-Bathroom  
890 sq. ft.



### The Cedarcroft

Two-Bedroom, Two-Bathroom  
1,275 sq. ft.