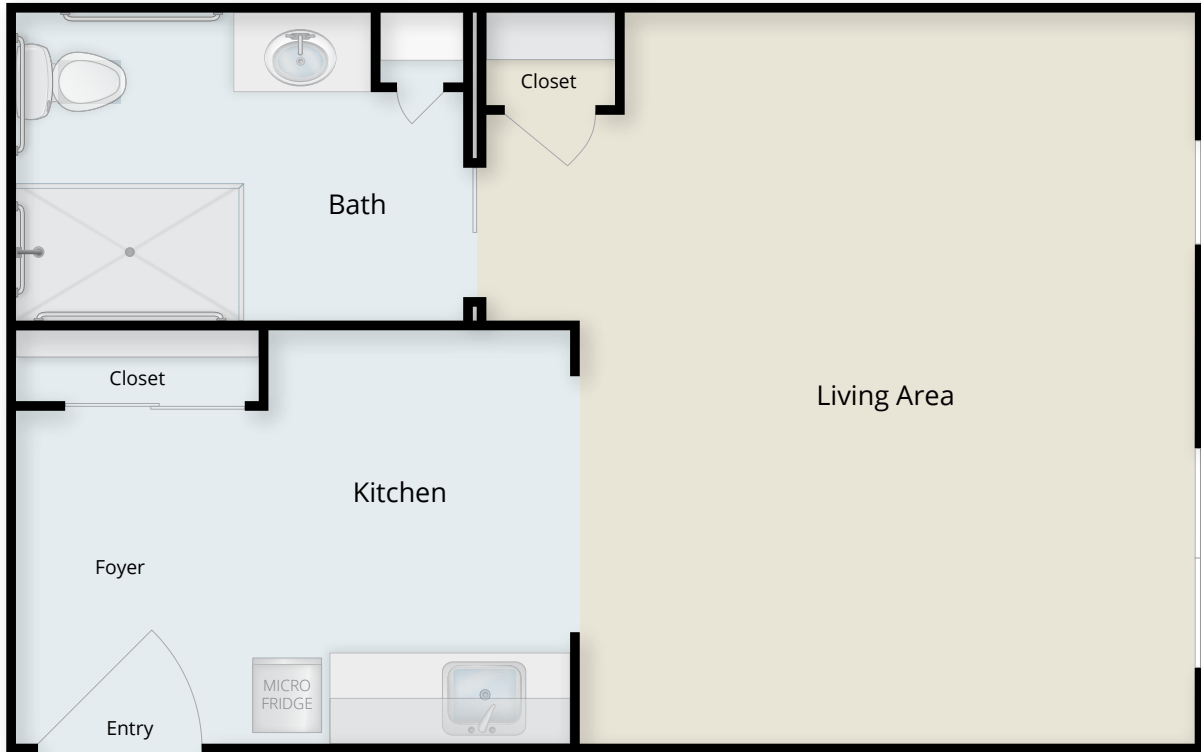


# Juniper Studio

(Approx. 438 SF)

Note: Floor plans illustrate a general plan which is subject to future change and revisions. Dimensions, boundaries and furniture or object position locations are for illustrative purposes only and are not intended to be exact.



PRESBYTERIAN  
**SENIOR LIVING**  
The Long Community

600 E. Roseville Road • Lancaster, PA 17601

[www.psl.org/long](http://www.psl.org/long)