

NORTHWOOD GARDENS



Terrace Homes at Kirkland Village



TABLE OF CONTENTS

- 6 About Northwood Gardens III
- 8 Features
- 10 Customization
- 12 Floorplans
- 20 Amenities/
Campus Life
- 22 Pricing



"We feel comfortable and secure here with less worries about maintaining a house. The staff is very responsive to help us. There is always something to do and places to go and opportunities to share."

– Thomas and Dolores,
Northwood Gardens Residents



About Northwood Gardens III



Take advantage of tailored homes that are ideal for those looking for a flexible, service-enriched independent lifestyle. Experience a unique blend of luxury and customization. Each Terrace Home offers corner views with floor plans ranging in size from 1,400 sq. ft. to over 2,000 sq. ft.



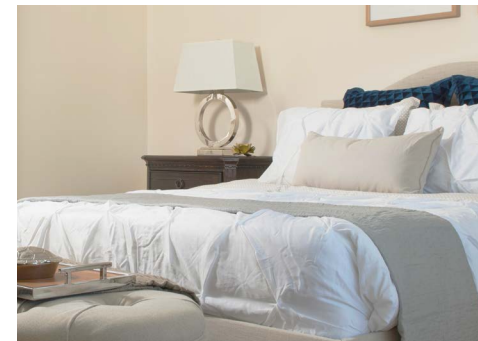
Features



**Delight in a variety of conveniences
that only Northwood Gardens III can offer.**

Terrace Homes Features Include:

- Lower level garage parking
- Appliances
- Covered patio or balcony
- Climate-controlled storage facilities
- Electronically controlled entrances
- Professional landscaping
- Large, spacious layouts
- Open-concept kitchens
- Laundry/utility rooms
- Walk-In closets



Customization

Make it Your Own

Customization options are available. Our team can work with you on upgrades.

- Hardwood flooring, upgraded carpets, ceramic tile and luxury vinyl plank
- Cabinetry and countertops
- Custom closets and storage solutions
- Upgraded appliances and more!

*Additional fees will apply for customization.



To help us fully understand your vision and preference, our Design Specialist will meet with you in our well-appointed Design Center and assist you with floor plans, downsizing and selections. Step-by-step, we will work through the array of options available to you and help select those that fit your style to bring warmth and life to your new home.



Floorplans



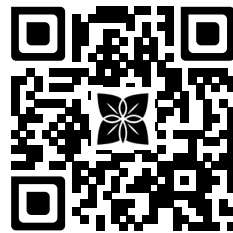
Angelica

2 Bedroom/2 Bath
1,633 sq. ft.

12



View Virtual Tour



Scan To Learn More



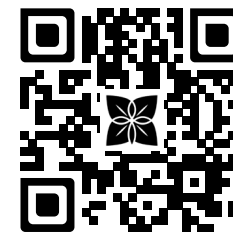


Hummingbird

1 Bedroom/Den/2 Bath 1,434 sq. ft.



View Virtual Tour



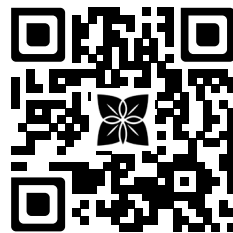
Scan To Learn More

Dahlia

2 Bedroom/Den/2.5 Bath 2,147 sq. ft.



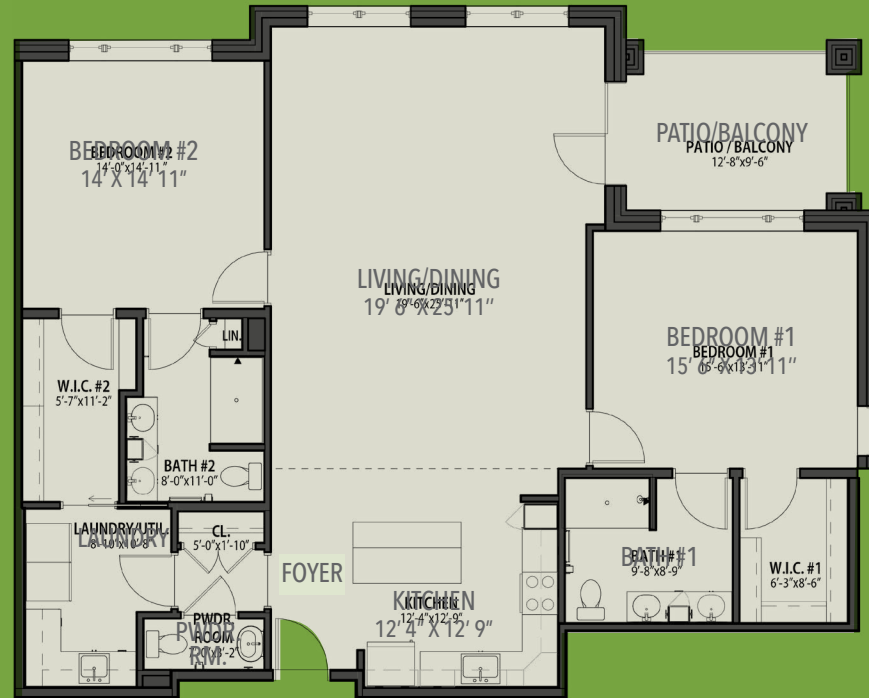
View Virtual Tour



Scan To Learn More

Bayberry

2 Bedroom/2.5 Bath 1,602 sq. ft.



18



Cardinal

2 Bedroom/Den/2.5 Bath 1,946 sq. ft.



19

Amenities/Campus Life



At Kirkland Village, enjoy worry-free and wellness-focused living supported by your favorite things: great value, engaging activities, friends, flexible dining options, convenient services, and amenities.

Living Better, Growing Together.

Unique Campus Features Include:

- Newly renovated dining venue featuring a hearth oven centerpiece, The Daily Grind Coffee Shop and a Marketplace Corner Shoppe for grab-n-go convenience.

- Aquatics and Fitness Center
- Opportunities to pursue artistic interests and hobbies.
- Resident driven culture of wellness engagement and purposeful living.

Residency Investment Fees and Monthly Maintenance Fees

(Effective January 1, 2024, subject to change)

	RESIDENCY INVESTMENT FEES						MONTHLY FEES	
NORTHWOOD GARDENS	50 MONTH PLAN		50% REFUND		70% REFUND**			
	Single	Double	Single	Double	Single	Double	Single	Double
Evergreen	\$277,700	\$296,425	\$437,100	\$455,825	\$555,400	\$574,125	\$3,881	\$4,367
Hummingbird	\$303,400	\$322,125	\$477,800	\$496,525	\$606,800	\$625,525	\$4,204	\$4,690
Bayberry	\$335,500	\$354,225	\$528,200	\$546,925	\$671,000	\$689,725	\$4,851	\$5,337
Angelica	\$340,800	\$359,525	\$536,200	\$554,925	\$681,600	\$700,325	\$4,851	\$5,337
Cardinal	\$416,800	\$435,525	\$656,500	\$675,225	\$833,600	\$852,325	\$5,821	\$6,307
Dahlia	\$447,800	\$466,525	\$705,200	\$723,925	\$895,600	\$914,325	\$5,821	\$6,307

Second person entrance fee \$18,725. Second person monthly fee \$486. ** All new residents must be age 79 or younger at time of contract signing to be eligible for this refund plan.





One Kirkland Village Circle | Bethlehem, PA
610.691.4700 | www.psl.org/kirkland
www.northwoodgardens.org