

Culture Champions of PSL

What is Culture?

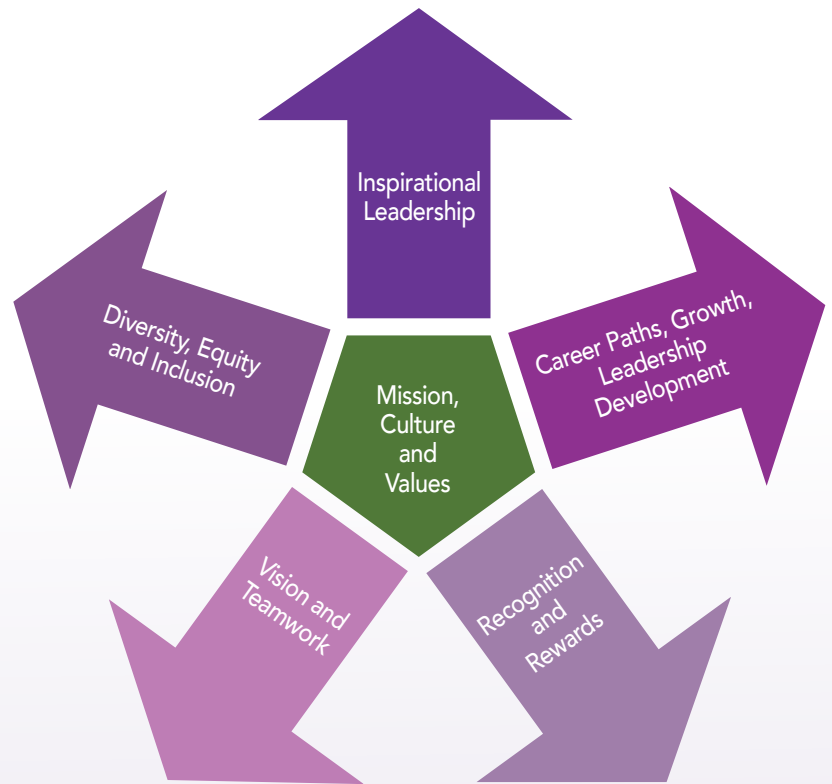
The set of shared attitudes, values, goals, and practices that characterizes an institution or organization

How We Define the PSL Culture:

A way of life that embodies the key concepts found in PSL values, aspirational aging and Diversity, Equity and Inclusion.

The PSL Values:

- **Mutual Respect**
Listen to others' voices. Seek to understand different perspectives. Champion individual choice.
- **Connectedness**
Create community. Value the collective power of teamwork. Enrich through common experience.
- **Trust**
Garner trust through our interactions. Be accountable for our work. Steward our resources wisely.
- **Creative Curiosity**
Discover what's possible. Be leaders in our changing world. Create a better way.



This diagram is a visual reference for leadership; as our Mission, Culture and Values are the foundations for all conversations, and each arrow from the center has an equal value in our progress forward.

What is a Culture Champion?

Culture Champions are PSL representatives empowered with living and teaching our values to others within their community or location. They lead the movement of living our values and Diversity, Equity and Inclusion (DEI) initiatives and encourage others to do the same.

Who is a great candidate for the Culture Champion program?

Culture Champions should represent all levels of living, departments, and shifts within the organization. You may have more than one Culture Champion at a time. Culture Champions should be team members who are positive representatives of the PSL Culture. They are eager to take on additional responsibilities. They have a positive attitude, approachable, and enthusiastic.

Anyone interested in becoming a culture champion should reach out to their supervisor for more details and information.