

More Peace of Mind.



We understand balancing life and caregiving tasks can be a challenge. If you are looking for additional support or have been considering at-home care, we invite you to explore the advantages of Personal Care at Presbyterian Home.

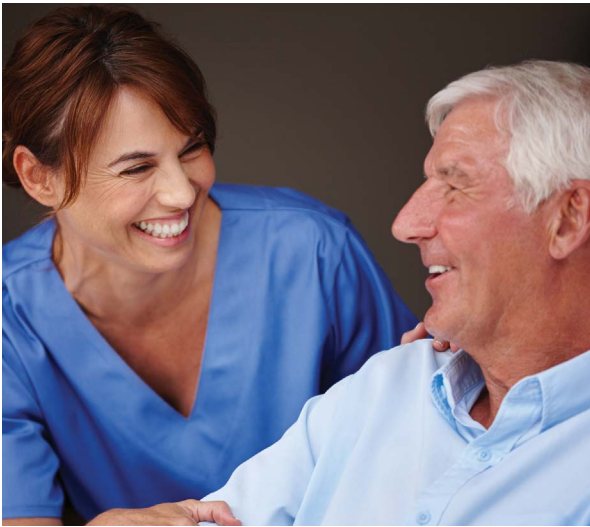
What is Personal Care at Presbyterian Home?

Personal Care provides seniors with support and assistance when needed with a focus on total well-being. Personal Care at Presbyterian Home works in harmony with residents and their families to ensure they meet each person's needs and can adjust care plans as those needs may change. You can expect our Personal Care community to provide your senior loved one with:

- Help in daily tasks like taking medications, bathing, dressing and maintaining a well-balanced diet
- 24-hour staffing and emergency call system with wearable individual alert pendants

- Assistance with scheduling medical appointments
- Medical management and assistance with coordination of hospital services or health center stays
- Provide the opportunity for companionship for those seniors who would rather not live alone and often host activities in a group setting to promote socialization





Residential Offerings

Our Personal Care floor plans range from 216 to 308 square feet and offer a wide array of amenities. Safe and comfortable accommodations provide just the right amount of space and privacy with help nearby if needed. Each residential offering includes:

- Beautiful, private maintenance-free residence with outdoor patios
- Three delicious, chef-prepared meals each day with special diet accommodations, plus snacks
- Fresh linen, personal laundry, and housekeeping services
- Individually controlled heat and air conditioning

To explore details and pricing, please [click here](#) for more information.

The Caregiver Journey

We know that caregiving can be a challenge. We are here for you, and we've compiled some great [helpful resources](#) with both new and experienced caregivers in mind.

Learn more about Personal Care at Presbyterian Home by calling Renee Moore at 570-601-8351 or email remoore@psl.org.



PRESBYTERIAN
SENIOR LIVING
Presbyterian Home

www.psl.org/williamsport

810 Louisa Street | Williamsport, PA

PERSONAL CARE

Presbyterian Home



Personal Care provides seniors with professional assistance when needed and a way to enjoy an active lifestyle. Our staff works in harmony with residents and their families to ensure they meet each person's needs and can adjust support plans as those needs may change. You can expect Presbyterian Home to provide you or your senior loved one help with daily tasks like taking medications, bathing, dressing and maintaining a well-balanced diet. On top of daily necessities, Personal Care at Presbyterian Home helps residents stay engaged and involved in activities around the campus and with their peers. We provide the opportunity for companionship for those seniors who would rather not live alone and often host activities in a group setting to promote socialization.

Personal Care Suite: 216 to 308 square foot private and semi-private rooms with an urgent call system, private bathroom, walk-in shower and spa bath.	Daily Rate
Standard Suite – 216 square foot private standard studio suite with a private half bathroom and a large, custom-designed spacious closet.	\$145
Deluxe Suite – 238 to 308 square foot private deluxe studio suite with a full European style bathroom and a large, custom-designed spacious closet.	\$164
Presbyterian Home offers personal care where you can exercise your independence while receiving the assistance needed.	

Rates effective January 1, 2024. Subject to change and availability. Not covered by Medicare or Medicaid.

In addition to striving for the highest standards of physical support services, we provide socially stimulating activities as well as 24-hour supervision of medical needs by nursing staff.

Veterans and surviving spouses who require Personal Care may be eligible for assistance from the Veterans Administration. Presbyterian Home at Williamsport offers assistance with obtaining these benefits should you qualify for them. Some long-term care insurance policies may also pay for Personal Care.



PRESBYTERIAN
SENIOR LIVING
Presbyterian Home

810 Louisa Street | Williamsport, PA 17701
570-601-8351 | www.psl.org/williamsport



Pricing is subject to change without notice. It is our policy to admit residents without regard to race, color, national origin, age, ancestry, sex, religious creed, handicap or disability.