

More Peace of Mind.



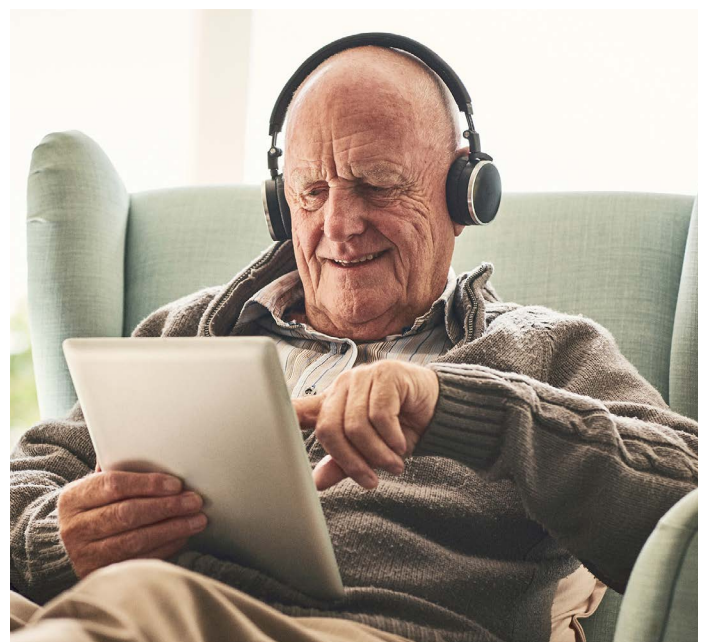
We understand balancing life and caregiving tasks can be a challenge. If you are looking for additional support or have been considering at-home care, we invite you to explore the advantages of Personal Care at St. Andrew's Village.

What is Personal Care at St. Andrew's Village?

Personal Care provides seniors with support and assistance when needed with a focus on total well-being. Personal Care at St. Andrew's Village works in harmony with residents and their families to ensure they meet each person's needs and can adjust care plans as those needs may change. You can expect our Personal Care community to provide your senior loved one with:

- Help in daily tasks like taking medications, bathing, dressing and maintaining a well-balanced diet
- 24-hour staffing and emergency call system

- Assistance with scheduling medical appointments
- Medical management and assistance with coordination of hospital services or health center stays
- Provide the opportunity for companionship for those seniors who would rather not live alone and often host activities in a group setting to promote socialization





Residential Offerings

Our Personal Care floor plans range in size and offer a wide array of amenities. Safe and comfortable accommodations provide just the right amount of space and privacy with help nearby if needed. Each residential offering includes:

- Spacious apartments that are pet-friendly
- Private, maintenance-free suites surrounding a beautiful outdoor courtyard
- Three delicious, chef-prepared meals each day with special diet accommodations, plus snacks
- Fresh linen, personal laundry, and housekeeping services
- Individually controlled heat and air conditioning in each suite

To explore details and pricing, please [click here](#) for more information.

The Caregiver Journey

We know that caregiving can be a challenge. We are here for you, and we've compiled some great [helpful resources](#) with both new and experienced caregivers in mind.

Learn more about Personal Care at St. Andrew's Village by calling Ann DeLarre at 724-464-1637 or email adelarre@psl.org.



PRESBYTERIAN
SENIOR LIVING
St. Andrew's Village

www.psl.org/standrews

A Life Plan Community | Indiana, PA



PERSONAL CARE

St. Andrew's Village

Personal Care provides seniors with professional assistance when needed and a way to enjoy an active lifestyle. Our staff works in harmony with residents and their families to ensure they meet each person's needs and can adjust support plans as those needs may change. You can expect our Personal Care community to provide you or your senior loved one help with daily tasks like taking medications, bathing, dressing and maintaining a well-balanced diet. On top of daily necessities, Personal Care at the St. Andrew's Village offers memory care and helps residents stay engaged and involved in activities around the campus and with their peers. We provide the opportunity for companionship for those seniors who would rather not live alone and often host activities in a group setting to promote socialization.

| Room and Board | Private Daily Rate |
|--|--------------------|
| Studio with Half Bath – 274 square foot private suite with private bathroom, closet, and individualized heating and air conditioning. | \$184 |
| Studio with Full Bath – 274 square foot private suite with private bathroom, closet, and individualized heating and air conditioning. | \$204 |
| Master Suite with Half Bath – 228 square foot private suite with private bathroom and walk-in shower and individualized heating and air conditioning. | \$204 |
| Master Suite with Full Bath – 228 square foot private half bathroom, two closets, and individualized heating and air conditioning. | \$212 |

Rates effective January 1, 2024. Subject to change and availability. Not covered by Medicare or Medicaid.

St. Andrew's Village offers Personal Care where you can exercise your independence while receiving the assistance needed. In addition to striving for the highest standards of physical support services, we provide socially stimulating activities as well as 24-hour supervision of medical needs by nursing staff.

Veterans and surviving spouses who require Personal Care may be eligible for assistance from the Veterans Administration. St. Andrew's Village offers assistance with obtaining these benefits should you qualify for them. Some long-term care insurance policies may also pay for Personal Care.



PRESBYTERIAN
SENIOR LIVING
St. Andrew's Village

1155 Indian Springs Road | Indiana, PA 15701
724-464-1637 | www.psl.org/standrews



Pricing is subject to change without notice. It is our policy to admit residents without regard to race, color, national origin, age, ancestry, sex, religious creed, handicap or disability.