

# More Peace of Mind.



We understand balancing life and caregiving tasks can be a challenge. If you are looking for additional support we invite you to explore the advantages of Assisted Living at Westminster Village.

## What is Assisted Living at Westminster Village?

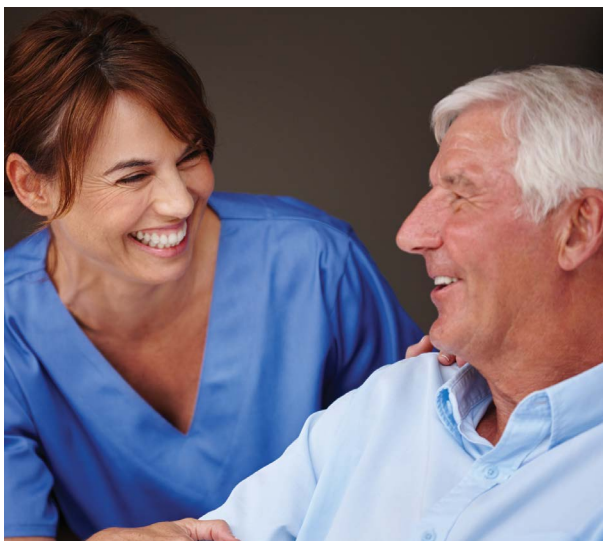
Assisted Living provides seniors with support and assistance when needed with a focus on total well-being. Assisted Living at Westminster Village works in harmony with residents and their families to ensure they meet each person's needs and can adjust care plans as those needs may change. You can expect our Assisted Living community to provide your senior loved one with:

- Help in daily tasks like taking medications, bathing, dressing and maintaining a well-balanced diet

- 24-hour staffing and emergency call system with wearable individual alert pendants
- Assistance with scheduling medical appointments
- Medical management and assistance with coordination of hospital services or health center stays
- Provide the opportunity for companionship for those seniors who would rather not live alone and often host activities in a group setting to promote socialization

## What is Memory Support at Westminster Village?

Chapelwood Assisted Living at Westminster Village provides a small, intimate setting for those who need memory support. The home configurations and private apartments, along with specially trained staff, help create feelings of comfort and security.



## Residential Offerings

Our Assisted Living range in size and offer a wide array of amenities. Safe and comfortable accommodations provide just the right amount of space and privacy with help nearby if needed. Each residential offering includes:

- Beautiful, private maintenance-free residence with outdoor patios and walking areas
- Three delicious, chef-prepared meals each day with special diet accommodations, plus snacks
- Fresh linen, personal laundry, and housekeeping services
- Individually controlled heat and air conditioning in each apartment

To explore details and pricing, please [click here](#) for more information.

## The Caregiver Journey

We know that caregiving can be a challenge. We are here for you, and we've compiled some great [helpful resources](#) with both new and experienced caregivers in mind.

Learn more about Assisted Living at Westminster Village by contacting 302-744-3558.



PRESBYTERIAN  
**SENIOR LIVING**  
Westminster Village

[www.psl.org/wvdover](http://www.psl.org/wvdover)

A Life Plan Community | Dover, DE



# ASSISTED LIVING

## Westminster Village

Assisted Living provides seniors with professional assistance when needed and a way to enjoy an active lifestyle. Our staff works in harmony with residents and their families to ensure they meet each person's needs and can adjust support plans as those needs may change. You can expect our Assisted Living community to provide you or your senior loved one help with daily tasks like taking medications, bathing, dressing and maintaining a well-balanced diet. We provide the opportunity for companionship for those seniors who would rather not live alone and often host activities in a group setting to promote socialization.

| Room and Board   | Private Rate | 2nd Person Rate |
|--|--------------|-----------------|
| <b>Ashley</b> – 374 square foot private studio suite with a private European style bathroom, kitchenette with pantry, living room/bedroom combination and two closets including a walk-in.               | \$210/day    | \$99/day        |
| <b>Bradley</b> – 466 square foot private one-bedroom suite with a private European style bathroom, kitchenette with pantry, and two closets including walk-in off the bedroom.                           | \$257/day    | \$99/day        |
| <b>Chelsea</b> – 501 square foot private one-bedroom suite with a private European style bathroom, kitchenette with pantry, study off of living area, and two closets including walk-in off the bedroom. | \$292/day    | \$99/day        |
| <b>Dorsey</b> – 574 square foot end unit private suite with a private European style bathroom, kitchenette, and three closets including walk-in off the bedroom.   | \$296/day    | \$99/day        |
| Plus Plan Add On   | \$36/day     | \$36/day        |
| Days Away Credit - beginning on the 8th day of bed hold/leave  | \$15/day     | \$15/day        |
| Private Duty/One-on-One Caregiver  | \$45/hour    | \$45/hour       |

Rates effective January 1, 2024. Subject to change and availability. Not covered by Medicare or Medicaid.

### SERVICES INCLUDE:

- Private rooms accented with your own furnishings
- 3 meals a day with special diet accommodations plus snacks
- Weekly linen service
- Central kitchens, library, living rooms, and gift shop
- Tray service delivery when medically necessary
- Chaplain services and spiritual enrichment programs
- Scheduled daily activities
- Entertainment programs
- Sightseeing and off-campus shopping and day trips
- Basic cable TV
- Medical appointment scheduling
- On-site health screening, including blood pressure check
- 24 hour emergency call system
- Assistance with coordination of services following hospital or health center discharge
- On-site ancillary medical services
- First aid administration
- 24 hour Personal Care Aides
- Medication management
- Daily check-in service
- Wellness education programs
- Lab request processing



1175 McKee Road | Dover, DE 19904  
302-744-3558 | [www.psl.org/wvdover](http://www.psl.org/wvdover)



Pricing is subject to change without notice. It is our policy to admit residents without regard to race, color, national origin, age, ancestry, sex, religious creed, handicap or disability.