



PRESBYTERIAN
SENIOR LIVING
Westminster Woods



Welcome to Westminster Woods

At Westminster Woods of Huntingdon, you can expect maintenance-free living and a supportive community of new friends, hobbies, gourmet dining options and more. Nestled on 122 beautiful acres, surrounded by woods and wildlife within a quiet, residential college town, our convenient location – close to State College, Raystown Lake and Juniata College – is ideal for opening up countless doors of opportunity.



Westminster Woods of Huntingdon is a Life Plan Community assuring peace of mind by providing priority access to higher levels of living, if ever needed. We also offer onsite inpatient and outpatient rehabilitation and supportive care services through our own home health agency, At Home Services, all conveniently located on one campus. As a special benefit, Independent Living residents can use up to 14 days per year free room and board at a higher level of living to help them recover more fully and return to independent living.

Hear What Others are Saying

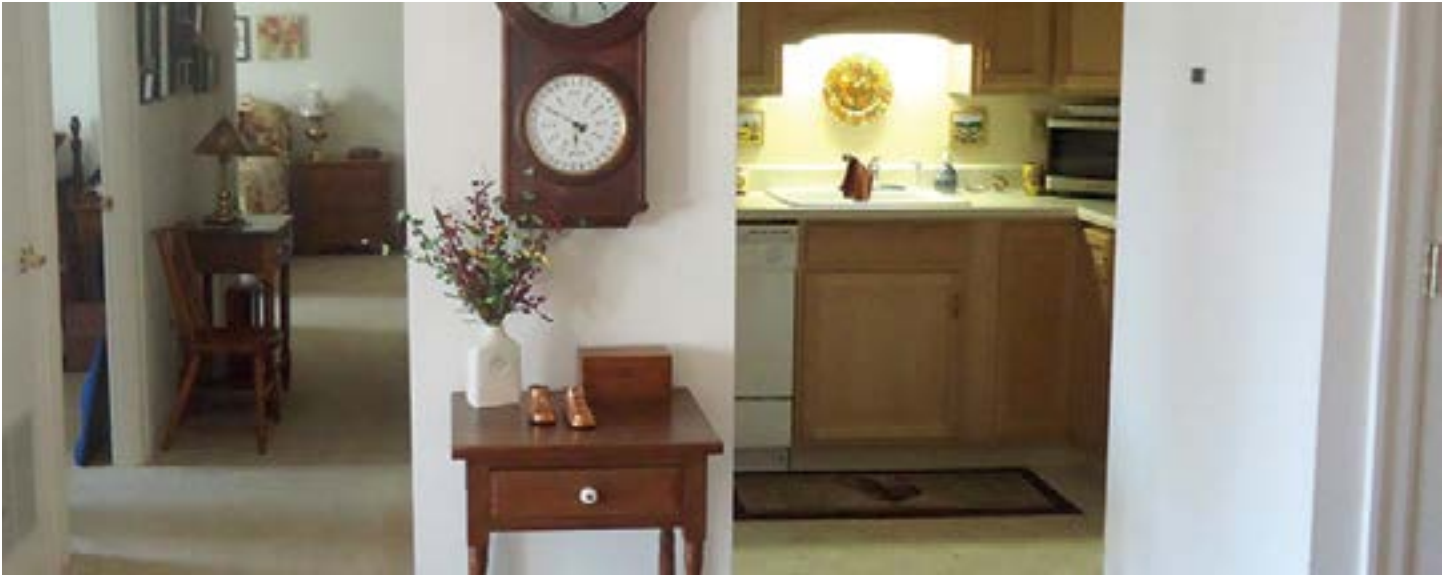
Living here is so very comfortable, meals are fantastic and reasonable. Everyone is friendly. It seems we have always lived here."

– Chuck and Georgie R.

Residential Options

Apartments

Westminster Woods offers more than just comfortable apartment living. Our one and two bedroom apartments provide a well designed living space of either 630 or 830 square feet, each with a balcony, plenty of closet space, and conveniently located near the Dining Room, Garden Café and the Terrace Community Center.



Villas

Our villas are a great option for those seeking more residential living space in a neighborhood-like setting. All villas offer two bedrooms, two baths, a fully-equipped kitchen, an All Season Room and a garage making it a comfortable transition from your house to your new home.

[Take a look at our floorplans, click here.](#)



Features Included in Residential Living (Apartments, & Villas):

- Pet Friendly
- Dishwasher
- Microwave
- Washer/Dryer
- Garbage Disposal
- Individually Controlled Heat & Air Conditioning
- Refrigerator/Freezer
- Stove
- Security System
- Cable TV hookup provided
- Villa and Apartment Upgrades possible

Life at Westminster Woods



Wellness & Fitness Center: We want to help you to feel free to create new friendships, embrace new hobbies, and achieve new goals. For this reason, Westminster Woods at Huntingdon offers a wide range of services to help you live an active and healthy lifestyle. Our fitness equipment and classes are available to residents at no additional charge. For a small fee, our personal trainer can design a fitness program to meet your needs and expectations and work with you to achieve your goals.

Residential Living Conveniences

- Resident Beauty & Barber Shop
- Scheduled Transportation
- Gardening & Walking Paths
- Guest Accommodations
- Life-Long Learning Opportunities Provided by Juniata College
- Active Resident Council
- Leisure Park Activities
- Community Library with a wide variety of publications

To help you be the best you can be, our Terrace Community Center offers a Living Room with fireplace, Social Room, Fellowship Center, Juice Bar, Fitness Center, Group Exercise Studio, and Multipurpose Room for arts and crafts and for life-long learning.

Dining Highlights: Our Dining Services consistently receive accolades from residents, families, and guests. The Commons Dining Room provides a gracious, casual, and comfortable dining experience. Take-out is also available.

In addition to a three-course meal offered at dinner, breakfast and lunch are provided in the Garden Café from 9 am to 3 pm. A variety of light fare menu items are provided, as well as take-out orders.



Learn more about life at Westminster Woods by calling 814-644-2065 or email us at wwhiving@psl.org.

Frequently Asked Questions about Residential Living

Must I be a member of a Presbyterian Church to be accepted for admission? No. As a Presbyterian Senior Living Community, we enjoy the strength and stability of an organization that has served seniors for more than 90 years. Caring for people is not just our job – it’s our calling. It is our policy to admit and treat all residents without regard to race, color, national origin, age, ancestry, sex, religious creed, handicap or disability.



Why does being not-for-profit make a difference?

Westminster Woods is proud to be a faith-based, not-for-profit provider which places “people before profits.” While for-profit facilities have the dual responsibility of providing care and satisfying the needs of investors, our attention can be more sharply focused on meeting the needs of the people we serve.

Do you embrace cultural diversity?

As a faith-based organization, Presbyterian Senior Living is founded on the belief that every human being is of infinite worth as a unique creation of God. Based on this premise, Presbyterian Senior Living is committed to fully embracing the diversity of all persons served, so that together, we can foster a culture of inclusion in an environment free of all forms of discrimination where all people are treated with dignity and respect. Our goal is to cultivate awareness and understanding of personal differences and biases so that an environment of understanding, acceptance, respect and support is established.

Are pets permitted?

Yes, dogs, cats and birds are welcomed in Independent Living. Please refer to the Community Pet Policy.

Is there a minimum age for residency? Yes, residents must be at least 55.



PRESBYTERIAN
SENIOR LIVING
Westminster Woods

www.psl.org/westminsterwoods

A Life Plan Community | Huntingdon, PA

Living Better, Growing Together

INDEPENDENT LIVING RESIDENCY INVESTMENT FEES

(Effective January 1, 2024 - subject to change without notice)

Our Fee Structure

For both singles and couples at Westminster Woods, a one-time **Residency Investment Fee**, plus a reasonable **Monthly Maintenance Fee** – based on an apartment or villa you choose – provides you with living accommodations that fit your lifestyle. Many of the residents find that living at Westminster Woods is more convenient and less costly than living in their own homes. The Residency Investment Fee is often covered by the sale of a house. The Monthly Fee is usually covered by Social Security, pensions and/or money used for monthly utility bills and home maintenance/repair, transportation, insurance premiums and property taxes.

Residency Investment Fee

We offer you a choice of two entrance plans. Both entitle you to a life-lease of your living unit, (i.e., the right to reside in the community for the rest of your life under the terms of the Residence and Care Agreement).

- Our **50 Month Plan** assures residents that if they should withdraw from the community within the first 50 months, they will receive a partial refund based on a 2% reduction of their Residency Investment Fee for every month of occupancy. After 50 months of occupancy there is no refund under this plan.
- Our **50% Refund Plan** has a slightly higher Residency Investment Fee but provides (after 25 months) for a 50% minimum refund based on a 2% reduction of the Residency Investment Fee for every month of occupancy.

*Subject to PA Estate Recovery Act.

Learn more about life at Westminster Woods by calling
814-644-2065 or email us at wwhliving@psl.org.

RESIDENCY INVESTMENT AND MONTHLY FEES 2024 RATES

(Effective January 1, 2024 - subject to change without notice)

APARTMENTS	RESIDENCY INVESTMENT FEES				MONTHLY FEES	
	50 MONTH PLAN*		50% REFUND*		(heat included)	
	Single	Double	Single	Double	Single	Double
The Woodside – 1 BR	\$101,750	\$108,350	\$152,350	\$158,950	\$1,812	\$1,952
The Geneva – 2 BR	\$138,050	\$144,650	\$206,800	\$213,400	\$1,812	\$1,952

Second person entrance fee \$6,600. Second person monthly fee \$140.

Apartment Monthly Service Fee Includes:

- Heat
- Water and sewer utilities
- Trash removal and recycling
- Interior and exterior building maintenance
- Real estate taxes
- Lawn care and snow removal
- Appliance maintenance
- Assistance with service coordination following hospital/health center discharge
- Home support evaluation (to enable residents to remain in their apartment with modifications or Support Services)
- 14 days of on-site nursing/personal care annually (when medically necessary, does not accrue)
- Fitness Center
- Wellness education programs
- Reserved Parking Spot

Not included in the apartment monthly fee: Internet Service, Telephone Service, Electric Utility, Dining Dollars.

**Subject to PA Estate Recovery Plan*



PRESBYTERIAN
SENIOR LIVING
Westminister Woods

www.psl.org/westminsterwoods

A Life Plan Community | Huntingdon, PA

RESIDENCY INVESTMENT AND MONTHLY FEES 2024 RATES

(Effective January 1, 2024 - subject to change without notice)

COUNTRY VILLAS	RESIDENCY INVESTMENT FEES				MONTHLY FEES	
	50 MONTH PLAN*°+		50% REFUND*°+			
	Single	Double	Single	Double	Single	Double
Hickory – 2 BR Single Villa (1,219-1,339 sq. ft.)	\$157,300	\$163,900	\$235,950	\$242,550	\$1,716	\$1,856
Birch – 2 BR Duplex Villa (1,333-1,342 sq. ft.)	\$171,050	\$177,650	\$256,300	\$262,900	\$1,716	\$1,856
Willow – 2 BR Duplex Villa (1,378-1,479 sq. ft.)	\$176,550	\$183,150	\$264,550	\$271,150	\$1,716	\$1,856
Oak – 2 BR Duplex Villa (1,504-1,530 sq. ft.)	\$178,750	\$185,350	\$267,850	\$274,450	\$1,716	\$1,856
Elm and Arbor – 2 BR Duplex Villa (1,538-1,598 sq. ft.)	\$191,400	\$198,000	\$287,100	\$293,700	\$1,716	\$1,856
Maple and Evergreen – 2 BR Duplex Villa (1,690-1700 sq. ft.)	\$194,700	\$201,300	\$292,050	\$298,650	\$1,716	\$1,856

Note: *Single villas are an additional \$6,500. Villas with a third room are an additional \$4,500. Second person entrance fee \$6,600. Second person monthly fee \$140.

Country Villa Monthly Service Fee Includes:

- Water and sewer utilities
- Trash removal and recycling
- Interior and exterior building maintenance
- Real estate taxes
- Lawn care and snow removal
- Appliance maintenance
- Fitness Center
- Wellness education programs
- Assistance with service coordination following hospital/health center discharge
- Home Support Evaluation (to enable residents to remain in their villa with modifications or Support Services)
- 14 days of on-site nursing/personal care annually (when medically necessary. Does not accrue.)

Not included in the villa monthly fee: Electric Utility, Telephone Service, Internet Service, Heat, Dining Dollars.

*Single villas are an additional fee

°Subject to PA Estate Recovery Act.

+Villas with a third room are an additional fee