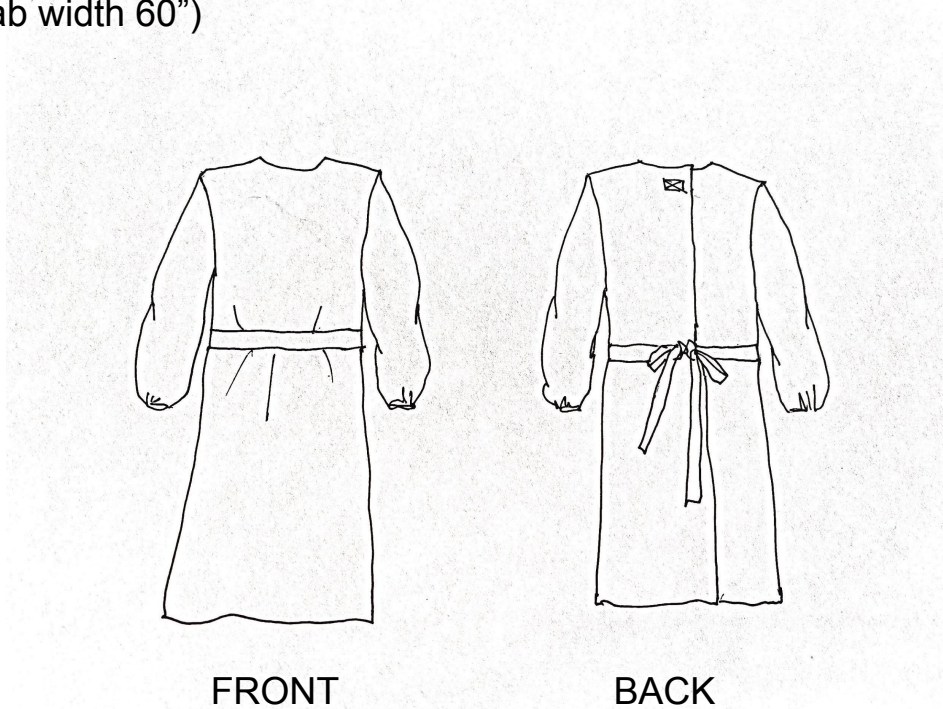


Level 1/2 Isolation Gown (COVID-19 Crisis Response)		Design Page	
Style No	IG1/2	Fabrication	Cotton Poly OR Polyester
Description	Re-engineered Isolation Gown	Initiated by	Fashion Girls for Humanity
Date	3/29/2020	Created by	Fashion Girls for Humanity

yield: 2.5 yds (fab width 60")



*Feedback / tag @FGFH2011viaFG / IG*

Level 1/2 Isolation Gown (COVID-19 Crisis Response)		STYLE IMAGE REFERENCE	
Style No	IG1/2	Fabrication	Cotton Poly OR Polyester
Description	Re-engineered Isolation Gown	Initiated by	Fashion Girls for Humanity
Date	3/29/2020	Created by	Fashion Girls for Humanity

Size L HALYARD\* Tri-Layer AAMI Level 2



FRONT



BACK


FRONT



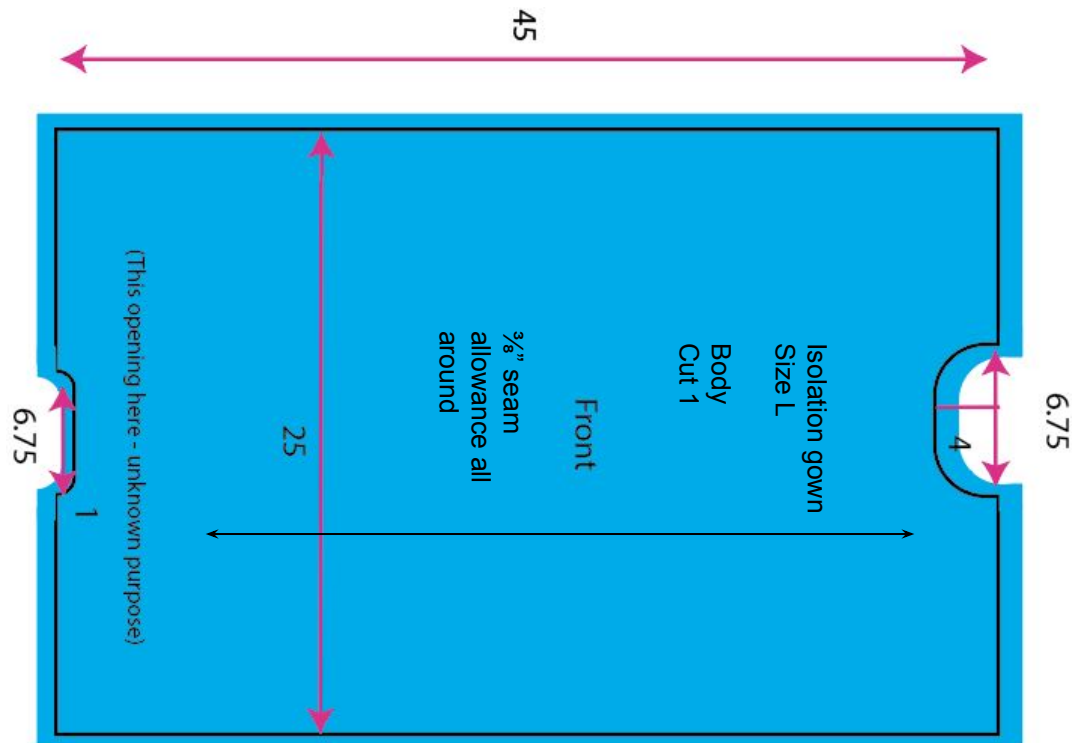
BACK



*Feedback / tag @FGFH2011viaFG / IG*

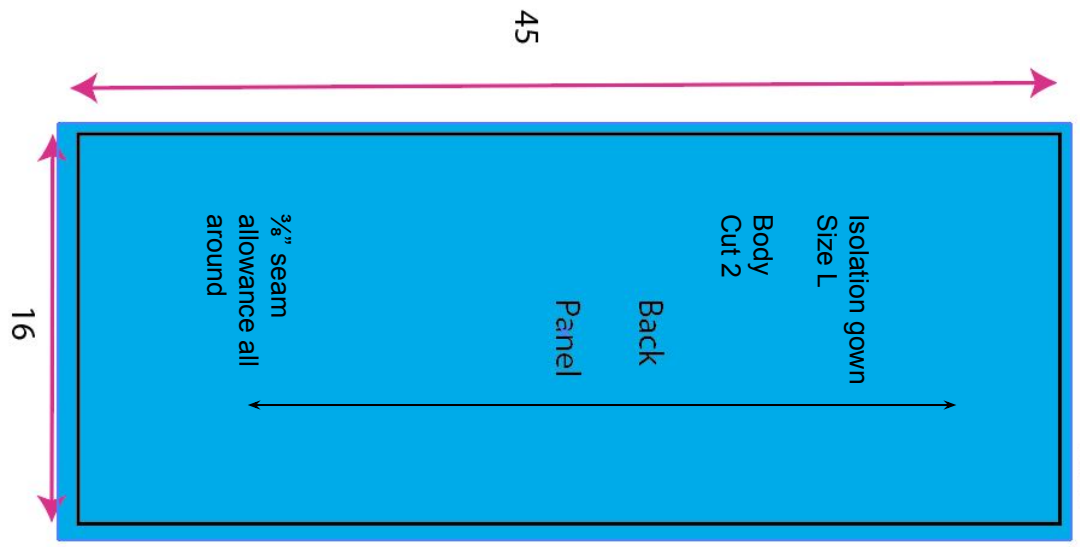
Level 1/2 Isolation Gown (COVID-19 Crisis Response)		BOM	
Style No	IG1/2	Fabrication	Cotton Poly / Polyester
Description	Re-engineered Isolation Gown	Initiated by	Fashion Girls for Humanity
Date	3/29/2020	Created by	Fashion Girls for Humanity 
Item	Placement	Color	Remarks
FABRIC	Body, sleeve	Not specified	Materials are typically made of non woven medical grade materials. In light of the shortage, CDC says "Reusable (i.e., washable) gowns are typically made of polyester or polyester-cotton fabrics. Gowns made of these fabrics can be safely laundered according to routine procedures and reused." Suggested alternative materials, if available, to create non medical grade suits are water repellant fabrics like nylon tafetta or poly microfiber, commonly used as fabric for umbrellas and raincoats. These materials can be reused and washed. For a disposable version, non woven material of at least 50 gsm can be utilized. Do a drop test with water to check if it will repel liquids.
1/2" twill tape or 1 3/4" self belt, 64 " long per suit	Belt	Not specified	Self belt (actual) but I recommend twill tape if this is going to be laundered not one time disposable
1/4" or 1/2" twill tape or velcro	Draw string at back closure	Match with fabric	
1/4" elastic tape	Sleeve hem	Not specified	Alternative: 1/4" garter, 1/4" mobilon
Thread	Seams	Match with fabric	
Page 3		Open Source Document	

Level 1/2 Isolation Gown (COVID-19 Crisis Response)		FRONT Body Pattern	
Style No	IG1/2	Fabrication	Cotton Poly / Polyester
Description	Re-engineered Isolation Gown	Initiated by	Fashion Girls for Humanity
Date	3/29/2020	Created by	Fashion Girls for Humanity



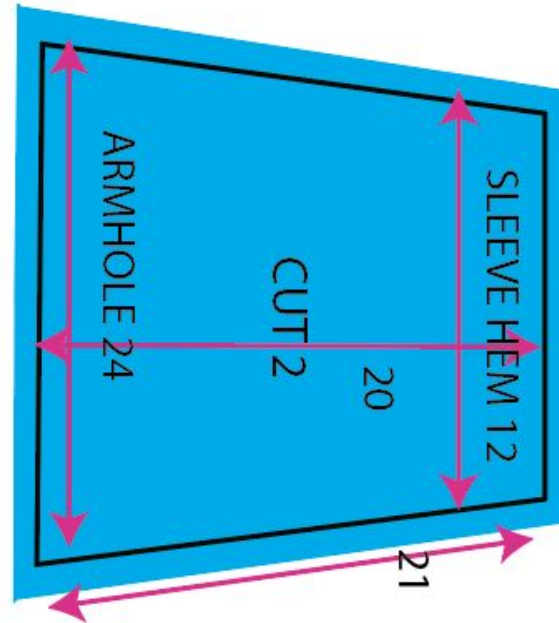
*Feedback / tag @FGFH2011viaFG / IG*

Level 1/2 Isolation Gown (COVID-19 Crisis Response)		BACK Body Pattern	
Style No	IG1/2	Fabrication	Cotton Poly / Polyester
Description	Re-engineered Isolation Gown	Initiated by	Fashion Girls for Humanity
Date	3/29/2020	Created by	Fashion Girls for Humanity



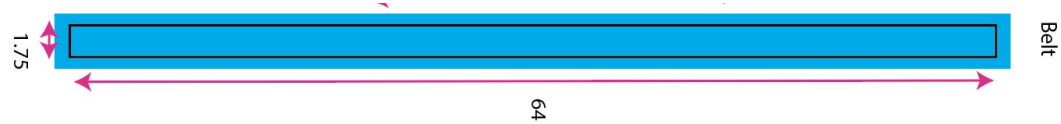
*Feedback / tag @FGFH2011viaFG / IG*

Level 1/2 Isolation Gown (COVID-19 Crisis Response)		SLEEVE PATTERN	
Style No	IG1/2	Fabrication	Cotton Poly OR Polyester
Description	Re-engineered Isolation Gown	Initiated by	Fashion Girls for Humanity
Date	3/29/2020	Created by	Fashion Girls for Humanity



*Feedback / tag @FGFH2011viaFG / IG*

Level 1/2 Isolation Gown (COVID-19 Crisis Response)		SELF BELT	
Style No	IG1/2	Fabrication	Cotton Poly OR Polyester
Description	Re-engineered Isolation Gown	Initiated by	Fashion Girls for Humanity
Date	3/29/2020	Created by	Fashion Girls for Humanity ●

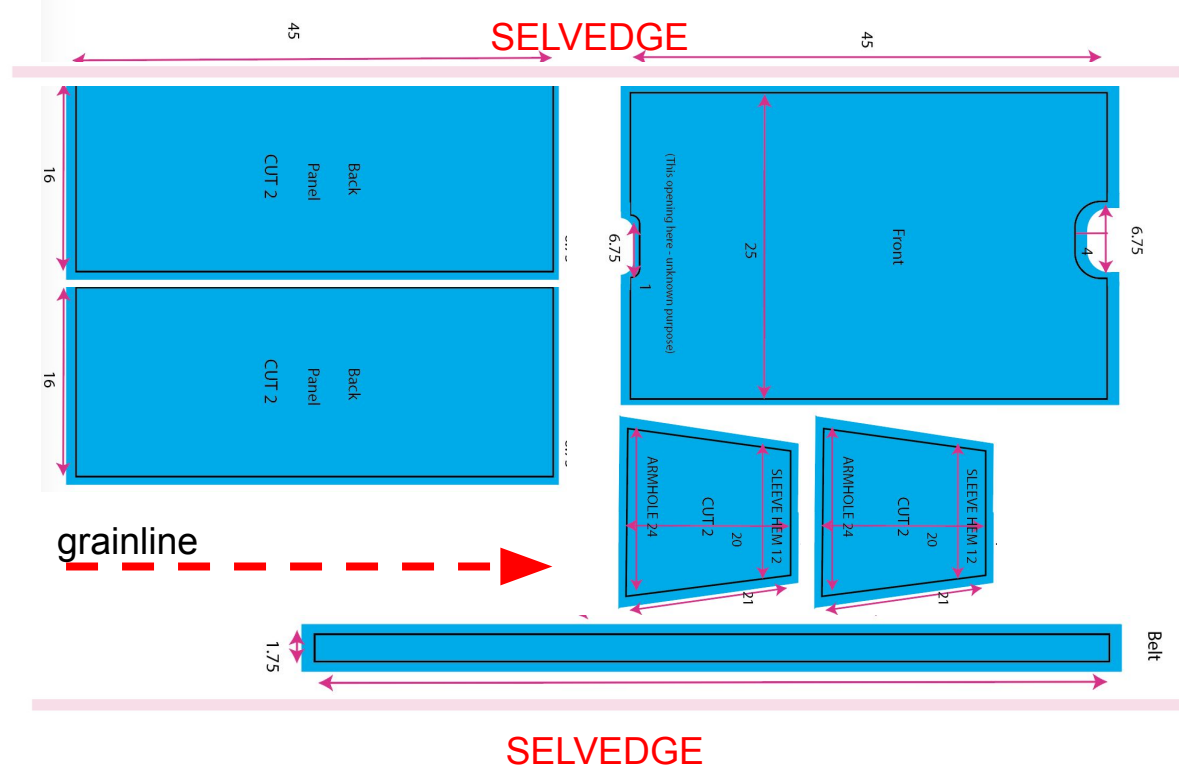


*Feedback / tag @FGFH2011viaFG / IG*

Level 1/2 Isolation Gown (COVID-19 Crisis Response)		LAYOUT AND CUTTING	
Style No	IG1/2	Fabrication	Cotton Poly OR Polyester
Description	Re-engineered Isolation Gown	Initiated by	Fashion Girls for Humanity
Date	3/29/2020	Created by	Fashion Girls for Humanity

Notes for Cutting and Layout:

1. PLEASE DO NOT PIN the pattern on to the fabric. Use weights or clamps to secure the pattern onto the fabric lay/speed. We are trying to avoid unnecessary holes.
2. Cut using sharpe shears / rotary cutter if possible.
3. Maybe you can use any left over to make bootie cover or masks.



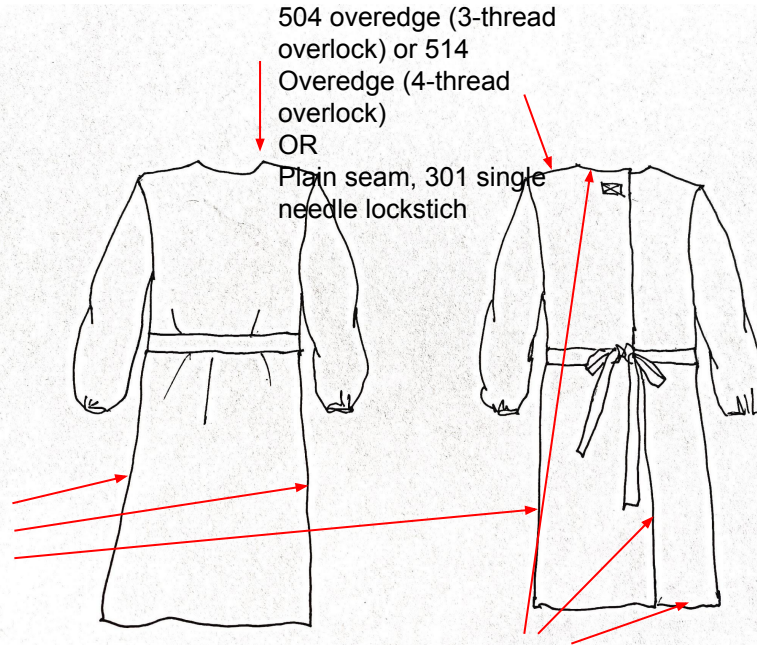
Feedback / tag @FGFH2011viaFG / IG



Level 1/2 Isolation Gown (COVID-19 Crisis Response)		Construction Detail Page	
Style No	IG1/2	Fabrication	Cotton Poly OR Polyester
Description	Re-engineered Isolation Gown	Initiated by	Fashion Girls for Humanity
Date	3/29/2020	Created by	Fashion Girls for Humanity

**Shoulder seam and sleeve overarm:**

504 overedge (3-thread overlock) or 514 Overedge (4-thread overlock)  
OR  
Plain seam, 301 single needle lockstich



**Side seam:**

504 overedge (3-thread overlock) or 514 Overedge (4-thread overlock)

OR  
Plain seam, 301 single needle lockstich

**Bottom seam, neckline, open back:**  $\frac{3}{4}$ " single turnback with  $\frac{1}{4}$ " double needle edge stitch or 504 overedge (504 overedge (3-thread overlock) or 514 Overedge (4-thread overlock))

**Original detail**

NECK DETAILS



**SPI:**

Overlock: 8-10 spi

Single and Double  
Lockstitch: 6-8 spi

Level 1/2 Isolation Gown (COVID-19 Crisis Response)		Construction Detail Page	
Style No	IG1/2	Fabrication	Cotton Poly OR Polyester
Description	Re-engineered Isolation Gown	Initiated by	Fashion Girls for Humanity
Date	3/29/2020	Created by	Fashion Girls for Humanity

**Sleeve hem (one suggested example)**

504 overedge  
(3-thread overlock) or  
514 Overedge (4-thread  
overlock) with rubber  
elastic or mobilon insert



**Original detail**

SLEEVE DETAILS (IMPORTANT TO HAVE ELASTICS)



**Measurement on flat (relax):**

Sleeve hem: 4"

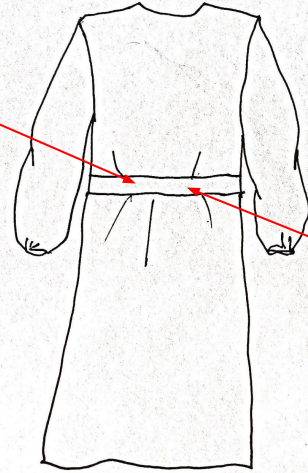
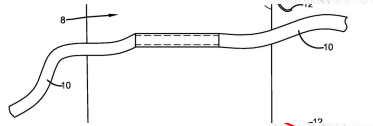
**Full Opening Measurement:**

Sleeve hem: 6"

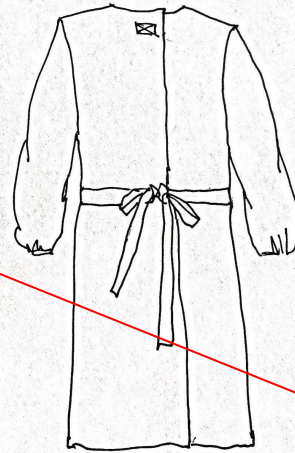
*Feedback / tag @FGFH2011viaFG / IG*

Level 1/2 Isolation Gown (COVID-19 Crisis Response)		Construction Detail Page	
Style No	IG1/2	Fabrication	Cotton Poly OR Polyester
Description	Re-engineered Isolation Gown	Initiated by	Fashion Girls for Humanity
Date	3/29/2020	Created by	Fashion Girls for Humanity

**Belt (self fabric or twill tape):**  
301 single needle lockstich



FRONT



BACK

**Original detail**

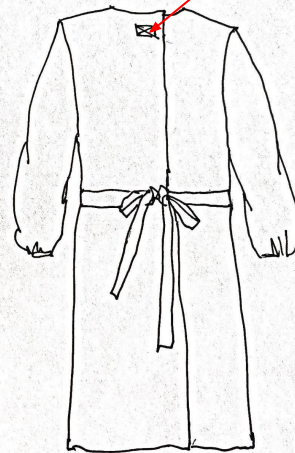
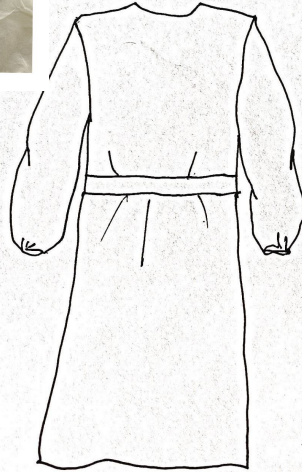
BELT DETAILS (ATTACHED TO FRONT PANEL!)



Level 1/2 Isolation Gown (COVID-19 Crisis Response)		Construction Detail Page	
Style No	IG1/2	Fabrication	Cotton Poly OR Polyester
Description	Re-engineered Isolation Gown	Initiated by	Fashion Girls for Humanity
Date	3/29/2020	Created by	Fashion Girls for Humanity

### Original detail

BACK CLOSURE (DOUBLE SIDED TAPE)



### Velcro (or self ties / twill tape):

301 single needle lockstitch reinforced with zigzag if available



SPI:

Overlock: 8-10 spi

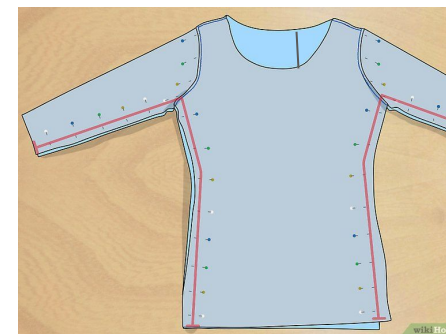
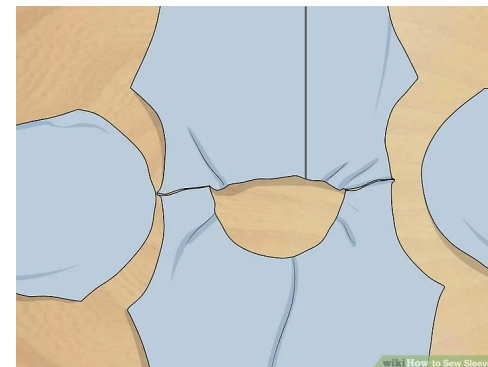
Single and Double  
Lockstitch: 6-8 spi



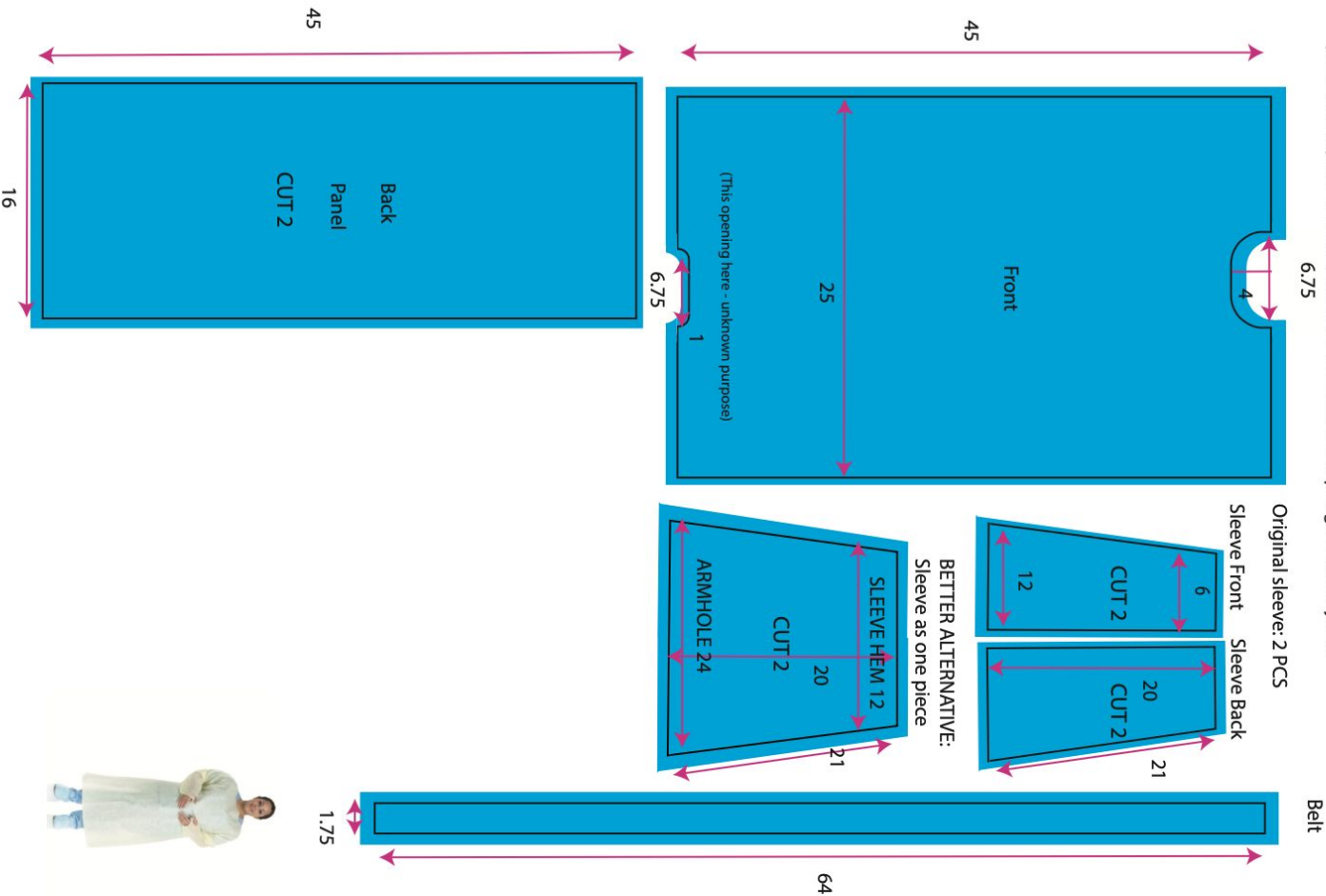
Level 1/2 Isolation Gown (COVID-19 Crisis Response)		Operations Breakdown	
Style No	IG1/2	Fabrication	Cotton Poly OR Polyester
Description	Re-engineered Isolation Gown	Initiated by	Fashion Girls for Humanity
Date	3/29/2020	Created by	Fashion Girls for Humanity

### Operations Breakdown (Assembly)

1. Sew the shoulder seams closed. The shoulder seams on your body piece need to be closed before you can sew a sleeve into place. Use your sewing machine to sew a straight stitch about  $\frac{3}{8}$ " from the raw edges of the fabric.
2. Match up the edges of the armhole opening and sleeve.
3. Sew along the edges. Finish seams with serge/overlock.
4. Attach 8  $\frac{1}{2}$ " elastic to sleeve hem.
5. Turn the garment inside out and line up the edges.
6. Sew along the bottom edges of the sleeve and along the sides of the gown body.
7. Fold over the edges of the hem. Hem the bottom, opening or neckline with overlock or sew by folding over the fabric by 0.5 inches (1.3 cm).
8. Sew a self belt / twill tape on the front body.
9. Sew tapes to tie / velcro to close back. Give generous length to accommodate different body size



Size L Pattern based on HALVARD AAMI Level 2 Over-The-Head Isolation Gown and Elastic Cuffs  
(Not to scale) 3/8" seam allowance all around Yield per garment 2.5 yards



Please tag @FGFH2011 Instagram for your finished gown!!!!  
updated 3/29/2020

FASHION GIRLS FOR HUMANITY

Size L HALYARD® Tri-Layer AAMI Level 2

FRONT



BACK



SLEEVE DETAILS (IMPORTANT TO HAVE ELASTICS)



FRONT BOTTOM DETAILS



NECK DETAILS



BELT DETAILS (ATTACHED TO FRONT PANEL)



BACK CLOSURE (DOUBLE SIDED TAPE)





On March 27th, American Hospital Association announced [#100MillionMaskChallenge](#) to bring local hospitals and manufacturers together. In addition to face shield and masks, they are planning to add [gowns](#) to address PPE shortage in the next week or so.

"The demand for personal protective equipment (PPE) has created a severe shortage of PPE across the world. The supply cannot keep up with the demand."

"Just as we have seen our field come together, we are delighted by the collective desire of manufacturers, the business community and the many individuals across the country who have expressed a desire to help rapidly produce surgical masks and face shields on a large scale for health care workers.

The American Hospital Association will now bring the initiative to scale across the country, facilitating new relationships between providers in need of surgical masks and manufacturers with the capacity to produce them. In recognition that shortages are much greater nationwide the AHA-led initiative will, over time, expand its scope to meet the growing and ongoing challenges."